

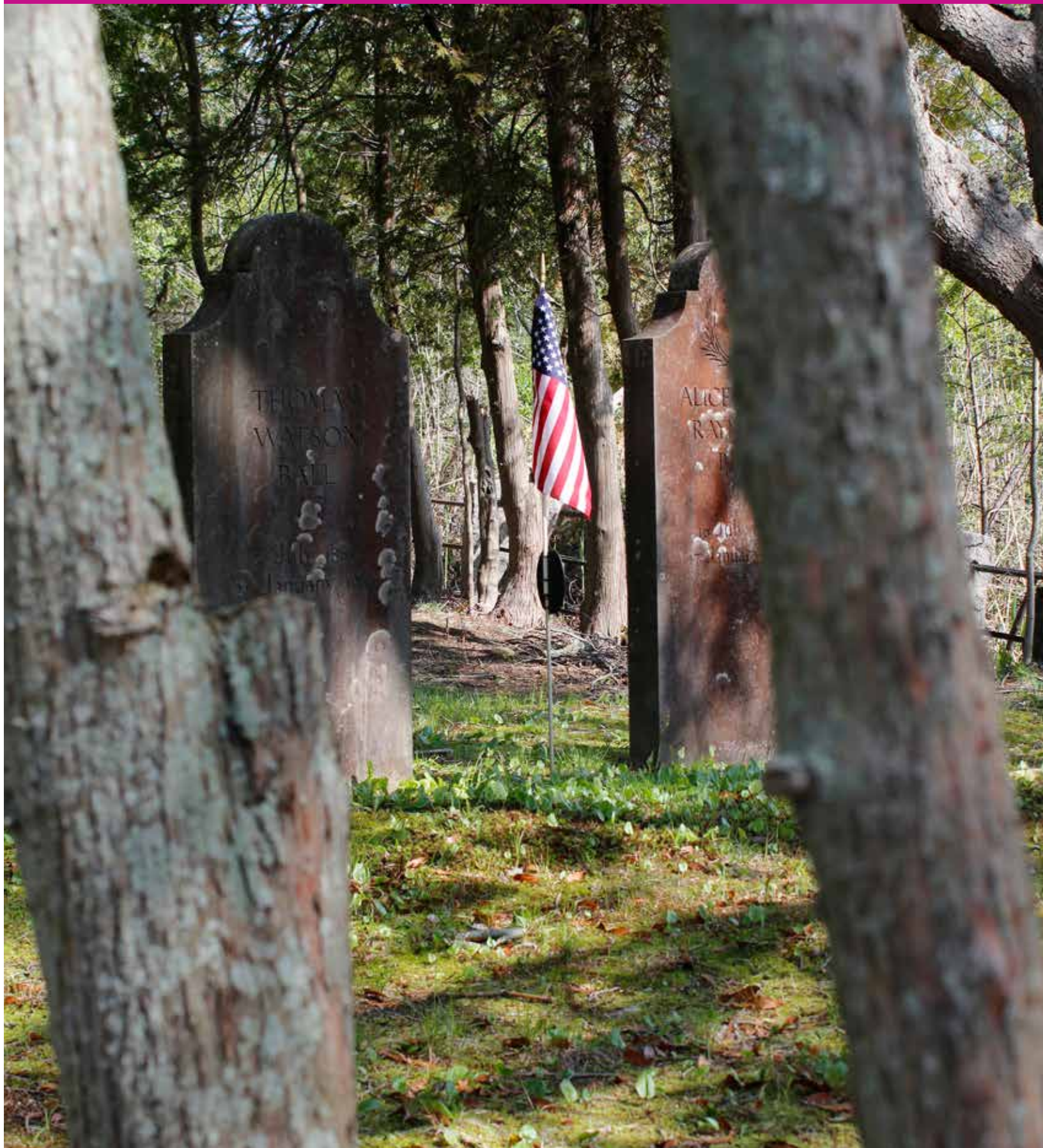
# Old Lyme



# Events

[www.eventsmagazines.com](http://www.eventsmagazines.com)

Volume 7 • Quarter 2 • 2013





# THE PATH TO BETTER CARE BEGINS WITH A SMARTER CHOICE



## The Choice That Leads You to Middlesex Hospital

At Middlesex Hospital, our advanced imaging tools are so accurate, they let us see into your future. Our top-rated doctors use innovative technology to deliver better results and get you back to your life faster. And our cancer treatments are so effective, they surpass some of the best survival rates in the country. It's all here at Middlesex Hospital — *The Smarter Choice for Care.*

[middlesexhospital.org](http://middlesexhospital.org)

The Smarter Choice for Care  
 MIDDLESEX HOSPITAL

## Selectwoman's Corner

The weather has finally warmed up, bringing with it beautiful flowers and leaves on the trees. Late Spring and early Summer are always so beautiful in New England, and particularly so in Old Lyme. It has been a busy few months since the Winter Blizzard, and I think everyone is happy to see the Winter of 2013 behind us.

**Sonia Marino, Sanitarian:** The Board of Selectmen is also delighted to announce that a new Sanitarian, Sonia Marino, has been appointed. Ms. Marino started on March 4, and since then, has kept quite busy familiarizing herself with our community, citizens, staff and historical files. She joins us after having worked in the Bristol-Burlington Health District, and most recently with the Connecticut River Area Health District. Her experience with the Wastewater Management District in Old Saybrook will be invaluable as we move forward with our own study of Wastewater Management. I am certain that Sonia Marino will serve the Town of Old Lyme well, and I hope you'll stop in to say hello.

**John Flower, Building Official:** The Selectmen are pleased to announce the appointment of John Flower as our new Building Official. Mr. Flower has worked for the Town of Old Lyme as Asst. Building Official/Asst. Sanitarian for nearly 15 years, and is well prepared to take on the job. After Storm Sandy, John worked tirelessly to restore service to as many homeowners as

possible in record time. There were so many damaged homes that needed approval before restoring electrical service that Mr. Flower worked many days into the evening and through weekends to get the job done. When homeowners needed work done prior to reconnection, John was quick to get out to their homes to re-inspect and expedite restoration. His diligence and hard work was noted by many homeowners and appreciated by the Town. We are proud to now have John Flower as our full time Building Official for the Town of Old Lyme, and we thank him for his hard work on behalf of the homeowners who suffered such loss.



First Selectwoman  
Bonnie Reemnyder

**Special Town Meeting on April 9:** Speaking of the Wastewater Management Study, the Town of Old Lyme approved the allocation of \$185,000 to fund the study of Wastewater in the Shore area of Old Lyme. There were approximately 120 people who attended to vote on the allocation for the Study, as well as

*continued on page 6*

### Welcome Our Nurse



East Lyme Pediatric Clinic would like to introduce Sonia Stavens, our licensed practical nurse. Since joining our practice in February of 2011, Sonia has participated in a wide-range of patient care from vaccinating our children to advocating and empowering parents in the care of their children. Sonia has a unique passion for pediatrics which is just one of the reasons why she chose to further her education to receive a Bachelor's in Nursing. Sonia strives to meet the needs of our busy parents here at East Lyme Pediatric Clinic. Skilled with an art of distraction, Sonia makes sure our children have a favorable, compassion-filled patient care experience.

"The best part of my day is when a child hugs me before leaving. Their eyes light up as they smile and ask if they can have their lollipop."  
East Lyme Pediatric Clinic has serviced South Eastern Connecticut for the past fourteen years and is currently accepting new patients. Please call (860) 739-7444 to schedule an appointment.

**EAR PIERCING NOW AVAILABLE**

Sajda Malik, MD    Jessie Brutus, MD  
Lauren Kopyt, MD    Sonia Stavens, LPN

**East Lyme Pediatric Clinic**  
We care for you  
170 Flanders Road  
Niantic, CT 06357  
(860) 739-7444



**The Gecko Promises 15% Savings...  
The Woman With The Bad Hair Says:  
Name Your Premium**

**Is the coverage there?**

- > Learn How To Read Your Auto Policy
- > Learn What Coverage You Do & Don't Have
- > Bring Your Policy For Review

**THURSDAY, JUNE 6, 2013 / 6:30 PM  
WATERFORD PUBLIC LIBRARY**

**POLITO & QUINN**  
TRIAL LAWYERS

Polito & Quinn does not sell insurance nor do we endorse any particular insurance. This is strictly an educational meeting so you can make informed decisions about auto insurance.



CONNECTICUT · WESTCHESTER, NY · MASSACHUSETTS · RHODE ISLAND

williampitt.com 

**COMING SOON!**

Watch for the opening of our Old Lyme Brokerage at 103 Halls Road  
(Next to Essex Savings Bank)



**OLD BLACK POINT WATERFRONT**

Old Black Point: The private 5 BR house and 2BR guesthouse sit on just over one and half professionally landscaped acres. The house was designed to maximize the striking views of Long Island Sound and Fishers Island.  
MLS: M9139934 \$2,200,000  
Jamie Childs 860.501.2110



**SWEEPING VISTAS**

Lyme: With sweeping vistas over Ram's Horn Creek out to the CT River this magnificent architecturally designed & custom built shingle style residence is remarkable in its quality & beauty, highlighted by a first-floor master suite & stunning kitchen!  
MLS: M9139913 \$1,925,000  
Jennifer & Jane Associates 860.227.6634



**WATERFRONT ON HAMBURG COVE**

Lyme: Open bright main house with character and beautiful views. Perfect blend of old and new. 3BRs, 2.1 baths, 3 car garage. Boat house and renovated Guest house. Beautiful lot with deep water dock.  
MLS: M9139791 \$1,725,000  
Colette Harron 860.304.2391



**COUNTRY LIVING AT ITS BEST**

Lyme: Private 40 acre estate located in the hills of Lyme. The main house is elevated with views of CT River Valley and Whalebone Cove. The home was totally renovated with attention to detail. Incredible value.  
MLS: M9138985 \$1,695,000  
Linda Hicks 860.391.1269



**AMAZING COLONIAL**

Old Lyme: Amazing restoration and addition completed in 2002. Seldom do you see such high quality materials, design and craftsmanship. Fireplaces, wide board floors, waterworks fixtures, amazing kitchen are only a few features in this home.  
MLS: M9138274 \$1,425,000  
Mariette Woolfson 860.883.3667



**SIMPLY SPECTACULAR!**

Lyme: A magnificent move-in ready country home offering 5 bdrms, 3.1 bths, 4 fpcls, 2 offices. Stunning detail and a balance of open and cozy spaces. Private 9.75 acres. Recent additions include a second two-car garage, in-ground pool & Koi pond.  
MLS: M9139033 \$975,000  
Rick Weiner 860.227.3191

ESSEX BROKERAGE | 13 MAIN STREET | 860.767.7488

MORTGAGE FINANCING AVAILABLE  
1.855.298.5650



Each Office is Independently Owned and Operated. © 2013 Citibank, N.A. equal housing lender, member FDIC. Citi, Citibank, Arc Design and Citi with Arc Design are registered service marks of Citigroup Inc.





CONNECTICUT · WESTCHESTER, NY · MASSACHUSETTS · RHODE ISLAND

williampitt.com



**Colette Harron**  
860.304.2391



**LYME**

Magnificent country estate with unparalleled views of the CT River and beyond. Completely updated w/stunning new MBR suite, DR and commodious LR. Stone terraces, stunning pool, one of the valleys best! Offered at \$2,595,000



**LYME**

Spectacular Waterfront on Hamburg Cove. Open bright main house with character and beautiful views. Perfect blend of old and new. 3 bed, 2.1 baths, 3 car garage. Boat house and renovated Guest house. Beautiful lot with deep water dock. Offered at \$1,725,000



**NIANTIC**

Waterfront - This exceptional 1890 home was totally renovated in 2008. Set high on .67 acres, it enjoys water views from every room and has deeded access to a dock on Pata-gansett Bay. 4 Bedrooms, 3-1/2 baths and kitchen with highend appliances. Enjoy this private setting. Offered at 1,450,000



**HADLYME**

Waterfront on a Peaceful Peninsula overlooking Whalebone Cove in Hadlyme. Totally renovated to perfection 4 bedr, 3.5 bath home with wide wood floors, custom doors and built-ins and detailed paneling. Enjoy magnificent views! 2 Car garage with attached guests quarters. Offered at \$1,477,000



**LYME**

Quiet Country Setting - Sunny custom colonial style thoughtfully updated. 15 private acres of lawns, fields and stone walls. 24x30 country carpenter barn, an open 2 horses stalls. Spacious light filled rooms, custom kitchen, 3BR/bath suites. Offered at \$949,000



**LYME**

Historic 5 bedrm, 3873 sqft on 4.33 acres. Open, French doors, stone patio. Includes 1300 sqft live-in artist studio commercially zoned, oversized stone fireplace and amenities. A second small studio. Stone work, beautiful mature gardens. Needs TLC. As is. Offered at \$475,000



**NIANTIC**

Majestic Victorian in Crescent Beach Assoc with water views shows pride of ownership. 2500 sqft. Original period details include magnificent millwork & hardwood floors, leaded glass windows, 2 fireplaces. Updated kitchen & baths. A MUST SEE! Offered at \$ 444,000



**EAST HADDAM**

Historic 1760 home, lovingly updated with sensitivity to period, 3800 sqft, 3 bd, 2.5 bths, includes finished barn/studio. Wide-board floors, moldings, built-ins...One acre pond teeming with wildlife, 3 patios, 3.7 acre, gardens, specimen plantings. Offered at \$415,000

ESSEX BROKERAGE | 13 MAIN STREET | 860.767.7488

MORTGAGE FINANCING AVAILABLE  
1.855.298.5650



Each Office is Independently Owned and Operated. © 2013 Citibank, N.A. equal housing lender, member FDIC. Citi, Citibank, Arc Design and Citi with Arc Design are registered service marks of Citigroup Inc.



CONNECTICUT · WESTCHESTER, NY · MASSACHUSETTS · RHODE ISLAND

williampitt.com



**SIMPLY BEYOND COMPARE!**

Lyme: As featured on the March cover of Connecticut Cottages & Gardens, this landmark c1750 barn was re-constructed on a stunning five-acre site & restored & expanded with impeccable vision. A remarkable country home offering an extraordinary life style! \$1,975,000



**SANDY POINT BEACH**

Waterford: Absolutely stunning 6300 SF residence custom built in 2011 is sited on Sandy Point Beach on the Niantic River with 550 feet of waterfront. Dock permit in place, open floor plan on three levels, state-of-the-art excellence! \$1,895,000



Jennifer Caulfield 860.388.7710  
Jane Macy Pfeiffer 860.227.6634

**Jennifer & Jane Associates**  
Sales Volume 2012 \$22,023,000



**EXQUISITE VILLAGE COLONIAL**

Old Lyme: Designed by noted architect Alice Washburn, this home is sited beautifully on 2 acres with stunning vistas. Total restoration and renovation in 2005 has brought this gracious home to mellow perfection! \$1,645,000



**DEEDED DEEP WATER DOCK ACCESS**

Essex: Within walking distance of Essex village this exquisite Cape exudes charm. Magnificent views beyond description over north cove to the CT River and beyond. New baths, first or second floor master possible. \$955,000



**CUSTOM COLONIAL**

Lyme: This custom built residence on 2.90 acres in the historic Hadlyme Ferry District, features vaulted ceilings, walls of windows, stunning chef's kitchen, fabulous stone terraces surrounded by stonewalls. \$775,000

**ESSEX BROKERAGE | 13 MAIN STREET | 860.767.7488**

Each Office is Independently Owned and Operated

SHOP SPIRITS & SAVE! • SHOP SEASIDE & SAVE! • SHOP SPIRITS & SAVE! • SHOP SEASIDE & SAVE!

**Come and Get it!**

**Shoreline's Best Selection of Wine, Brew and Spirits**

**SEASIDE WINE & SPIRITS**

**118 Main Street - Old Saybrook**

**860.388.3015**

*Shoreline's Best*

SHOP SPIRITS & SAVE! • SHOP SEASIDE & SAVE!

SHOP SPIRITS & SAVE! • SHOP SEASIDE & SAVE!

**SERVICE - SELECTION - EVERYDAY LOW PRICES - CONVENIENCE  
EASY PARKING - WEDDING & PARTY SOLUTIONS - SMILES**



# 3rd YEAR WINNER!

**TeamJermainne Real Estate Services**  
is proud to announce that **Brian Jermainne**  
has been named a **Five Star Real Estate Agent<sup>SM</sup>**  
for the third year in a row!

Awarded to real estate agents who have scored highest in client and industry peer based research conducted by a independent research company. The award is awarded to just 7 percent of real estate agents in any market area. Real Estate agents are not able to "buy" their way onto the list, and the award is not based on sales volume,

but solely on how consumers and industry peers have evaluated their experience in working with that agent. Each respondent was asked to evaluate only real estate



agents whom they have worked with and evaluate them based upon nine criteria: customer service, integrity, market knowledge, communication, negotiation, closing preparation, finds the right home, marketing of home, and overall satisfaction.

**Check out the full article in the March edition of *Connecticut Magazine*.**

Again this year...thank you to all the respondents who took the time to answer the surveys and phone calls involved in the research. We really appreciate it and will continue to provide the best service to our clients old and new and to look for ways to improve and do more for each every one of them. Your confidence inspires us.

If you are looking for an experienced REALTOR that provides award winning service, please contact Brian either by phone or better yet email. We LOVE to help!



**Brian Jermainne**, ABR, ASR, CRS, ePRO, GRI, SRES, SRS  
Broker/Owner  
Brian@TeamJermainne.com



**Leslie Jermainne**, ePRO  
Realtor  
Leslie@TeamJermainne.com

**860-662-0230**

 Follow us on Facebook at: [www.facebook.com/TeamJermainneRealEstate](http://www.facebook.com/TeamJermainneRealEstate)

# www.TeamJermainne.com

# Events

MAGAZINES



## Old Lyme Events

### TM Ventures, LLC

dba **Essex Printing & Events Magazines**

18 Industrial Park Road, P.O.Box 205  
Centerbrook, CT 06409  
860-767-9087 Fax 860-767-0259  
www.essexprinting.com

#### Publisher

William E. McMinn

#### CFO / Manager

Suzanne Spires

#### Editor / Art Director

Kathy Alsop  
kathy.events@comcast.net  
860-391-4372

#### Cover Editor

AC Proctor  
860-767-9087

#### Advertising Sales

Ward Feirer  
wfeirer@gmail.com  
914-806-5500

Betty Martelle  
betty@eventsmagazines.com  
860-333-7117

John Vento  
jvento@eventsmagazines.com

#### Magazine Layout

Amy Bransfield  
Patricia Stenbeck

Cover Photo by AC Proctor

[www.eventsmagazines.com](http://www.eventsmagazines.com)

**198,500 READERS  
13 TOWNS  
EVERY QUARTER**

Copyright © 2012 Events Magazines. All rights reserved.

No part of this publication may be reproduced or transmitted in any form or by any means, electronic or mechanical, including photocopy, recording, or any information storage and retrieval system without written permission.

Not responsible for omissions or typographical errors.

• *Selectwoman's Corner continued from page 1* •

the allocation of \$27,300 for Kiosks and the reconfiguration of parking on Hartford Ave. After presentations and much discussion, both items passed at the Town Meeting.

**Wastewater Management Task Force:** The Task Force has been very busy through the late Winter and early Spring. After receiving qualifications from six firms in response to the Request for Qualifications, the Task Force decided to interview four of the firms and ultimately ended up recommending the firm of Woodard and Curran to the Board of Selectmen. The Board then met with the firm, as well as the Chairman of the Task Force to conduct an additional interview before approving them to conduct the Study. Throughout the process, the Task Force has worked closely with Carlos Esguerra from the CT DEEP to make sure that all necessary steps have been taken to qualify for Clean Water Funds. Once Woodard and Curran was engaged, they have also worked closely with Mr. Esguerra on the Scope of Work (SOW) and Application. Prior to the Town Meeting, we were notified by the CT DEEP that the proposed SOW had been approved and the study met the criteria for 55% reimbursement of the cost of the study. Since the approval at Town Meeting, the Task Force has continued to work with the firm on sampling of soils and assessing the needs of the shoreline area. The study will look at several options for wastewater management, as required by the CT DEEP. We will continue to keep the community posted on the progress of this important effort as we move forward.

**Budget for FY 2014:** The Board of Finance once again worked hard throughout the Winter and early Spring to hammer out a budget for the Town of Old Lyme. We are all pleased to report that this year's proposed budget has only a slight increase in the mill rate, from 19.26 to 19.30 mills. This increase represents an overall increase of \$169,825 over the FY 2013 budget. The Budget hearing on Monday, April 22 at the Town Hall was well attended and provided an important opportunity for citizens to understand the proposed budget and have their questions answered. Provided the District #18 budget is approved on schedule, the Town Meeting to approve the Budget for FY 2014 will be held on Monday, May 20. It is important to acknowledge the hard work of each of the members of the Board of Finance: Chairman Andy Russell, H. Perry Garvin, Christopher Kerr, David Woolley, Wayne Devoe, Janet Sturges, and alternates David Kelsey, Robert Jose and Bennett BJ Bernblum. Thank you all for your many hours of service.

**Route 156 Bike Path and Sound View Improvements Grant Funding:** We continue to move forward on the proposed bike path and Sound View improvements. A committee has been established to work develop a Request for Qualifications (RFQ), which has since been advertised in The Day, and posted on the DAS website and our Town website. The bike path will connect the bike path that comes across the Baldwin Bridge, ending at the corner of Halls Road and I-95 overpass to Hartford Ave. off of Rte. 156. At the end of Hartford Avenue, there will be a park, complete with restrooms, picnic area, bike racks and a gazebo with open area for events. The park will be in the current Town Parking lot, and there will be a parking lot that can

*continued on page 7*



• *Selectwoman's Corner continued from page 6* •

accommodate 44 cars. While this will decrease the parking available through Town owned parking spaces, there are still many privately owned parking lots for visitors to park. Once a firm is chosen to work on the plans and specs, they will submit a Scope of Work (SOW) and proposed cost, which will be approved at a town meeting, as it is likely to be over the \$20,000 threshold. Please be sure to follow the progress by visiting the Town website at [www.oldlyme-ct.gov](http://www.oldlyme-ct.gov). You can then click on Current Projects, and follow the links to the Route 156 Bike Route Connection/Sound View Park Improvements Project. All Committee meetings and minutes will be posted at this site, as well as information on the RFQ. Thanks go to this committee for their hard work, which includes Selectwoman Mary Jo Nosal, Selectman Skip Sibley, Frank Pappalardo, Chairman of the Sound View Commission, and Angelo Faenza, resident of Sound View.

**Rogers Lake Dam Update:** For over ten years, there has been talk of the repairs to the Rogers Lake Dam and a lot of work has been done to develop plans, secure permitting and funding, and keep the project moving forward. Nathan L. Jacobsen has worked with the Town of Old Lyme over the years to assess the condition of the dam, and develop the best approach to repairs. Having completed the plans and specs, and secured the permits to proceed, the Town of Old has gone out to bid for construction on the project. As of this writing, Mattern Construction, Inc. has been awarded the job and we expect to

have the project completed by September of 2013. The project includes an aluminum fish ladder that will allow the alewives to return to their natural spawning grounds in Rogers Lake. Funding for the project has come from a STEAP grant from the State of Connecticut, a grant from the Connecticut River Watershed Council for the fish ladder, and the Town of Old Lyme. The Board of Selectmen would like to thank former First Selectman Timothy C. Griswold for continuing to work on this project, and Ellie Czarnowski, who is also on the Committee. It has been a long, drawn out process, so we will no doubt plan a celebration when the project is completed.

**"The Doughboy" Returns to Memorial Town Hall:** Prior to the renovations of Memorial Town Hall in 2007 and 2008, "Spirit of the Doughboy", a very large pastel of a soldier, with arm extended hold an American Flag, and Lady Liberty supporting his effort, hung proudly above the central staircase of the front entrance. The artwork was created by Albert Herter, and donated by W.E.S. Griswold in 1930 for this place of honor. Many who visited the Town Hall remember the impressive work of art, and questioned why it was no longer on display after the renovations. The artwork was sent out last Fall for renovations to the pastel, and to have it properly sealed in the frame with museum quality acrylic. Once returned, finding the right company to safely return it to the wall was a challenge. As usual, the answers are right under our nose, and Mike Magee, the same carpenter who completed the improvements to the Selectmen's Office, agreed to take on the task of hanging the large piece. Finally, our "Doughboy" has been

*continued on page 8*



# SHORELINE SANITATION

*Your Complete Septic  
System Service Provider*

- Septic Tank Pumping
- Septic System Repair
- New System Installation
- Septic Inspections/Realty Transfers



CT License #002261

Ask about  
the new  
**soilAir** systems™

**7 Day Emergency Service**

Call today for a Free Estimate

Visit our website:  
[www.shorelinesanitation.com](http://www.shorelinesanitation.com)

**860-434-0052**

*Serving Residential/Commercial & Industrial Customers Since 1978*

• *Selectwoman's Corner continued from page 7* •

returned, and we celebrated the event with a reception on April 22, 2013. At that time, Tim Griswold again stepped up to the plate (actually up on the ladder) to attach the small sign describing the artwork and donor. We are all proud to have "The Doughboy" returned to this place of honor in Memorial Town Hall.

**Volunteer Fair:** Imagine being a High School Junior and being able to put together an event that highlights the volunteerism in one community. This is the task that was accomplished, and in an impressive way, by Fiona Barrett, a junior at Lyme-Old Lyme High School. On April 23, more than 25 organizations gathered to highlight their volunteer opportunities to the community. Of course, the Town of Old Lyme is always looking for volunteers to serve in a variety of ways, so was represented well at the Fair, for all Boards and Commissions, specifically by Don Bugbee representing Parks and Recreation. The event was attended by over 60 people and gave many an opportunity to see just how much is available in our community. Hopefully, the end result will be many more people volunteering their time and making Old Lyme an even better place. Congratulations to Ms. Barrett for her hard work and success on this event. We are so proud of you!

Thank you to **Sherry White** for over 8 years as the Senior Center Director at Lymes' Senior Center. Ms. White resigned as of March 28, 2013 due to personal reasons. A search committee has been established to hire a new person for the job opening. We hope that by the time this newsletter is printed, we will

have announced the hiring of a new person for this position. Our sincere thanks and best wishes go to Sherry for all the love, support and hard work that she gave to our seniors in Lyme and Old Lyme. She was beloved among the seniors who patronized the Center and her presence will be sorely missed.

A new organization, **Mentoring Corps for Community Development, aka MCCD**, has been established by a group of citizens whose mission is "To encourage and empower those with needs by drawing into service volunteer mentors with special talents and expertise, thereby creating a more vital and engaged community." Simply put, they are reaching out to help in many valuable ways. The organization, which was founded in 2012, was quickly put to the test in the Sandy aftermath. The members have advocated for Storm Sandy victims to get through the rebuilding process, including all of the challenges in working with FEMA, Small Business Administration (SBA), finances, tradesmen, land use and building departments, etc. Throughout the process, they have developed a matrix for future reference when disaster strikes. It has been a pleasure supporting their efforts and working with them on their efforts. Stay tuned for great things from this very impressive group, and many thanks for their selfless efforts on behalf of others.

**Congratulations to the Lyme Old Lyme Graduating Class of 2013, including Selectwoman Nosal's daughter Meghan! We wish all of you the very best.**

**Save the Date:** Plans for the Midsummer Festival are in full swing. The Festival is scheduled for July 26th and 27th, culminating in a Fireworks Display behind the Middle School on

*continued on page 9*

**TRUST YOUR CAR TO THE REPAIR SHOP MORE PEOPLE TRUST...**

*We are a full service garage dedicated to quality work and service.*

**"The Only Call You Need For Quality Service & Repairs"**

**AUTO SERVICE**  
of  
**Old Saybrook, Inc.**

*Servicing Domestic & All European Cars Including Mercedes, BMW, Jaguar, Audi, Saab, Volvo & VW*

**860-388-6838**



We employ ASE Certified Technicians



From oil changes & scheduled maintenance to engine repair or replacement, we can provide complete mechanical & electrical service to your vehicle.



**4 JADE COURT • OLD SAYBROOK**  
**HOURS: MON. - FRI. 8 a.m. - 5 p.m.**





## Town Clerk's Office

### Congratulations!

We congratulate the following on their recent marriages:

Michael Robert Lecza & Jessica Ann Cormier - Sept. 30, 2012  
 Philip James Speirs & Ana Yopez - February 8  
 Jason Dennis Carrier & Catherine Coppola Masilotti - February 10  
 John Richard Nelson & Jane Rowley Marsh - March 9  
 William Davidowsky 3rd & Casie Gena Brown - March 24  
 Jonathan Basil Wilder & Laurie Jean Smith - April 22

### With Sympathy

We would like to express our condolences to the families of recently deceased Old Lyme residents:

John Stephen Barnas	Agnes L. Martin
Lillian Cancro	Helen M. Morgan
Nicholas Clark	Nancy Ann Padegenis
Ethyl C. Comerford	Carmine F. Sessa
Joaquin A. Dorantes, M.D.	Bernice Silverman
Henry William Erpenbeck	John M. Smith
Olwen M. Falkenstein-Cullen	Elsie Mae Swaney
Roberta Griswold	Shirley Rose Watt
Russell Lawson	

— Eileen K. Coffee, Town Clerk,  
 Vicki Urbowicz, Assistant Town Clerk

• *Selectwoman's Corner continued from page 8* •

Saturday evening. This year promises to be the best yet, and we have already put in our order for phenomenal midsummer weather!

Special thanks to both Selectmen for their continued support and hard work for Old Lyme. **Selectwoman Mary Jo Nosal** and **Selectman Skip Sibley** have both worked hard on several projects, including the Volunteer Incentive Review Committee, the Rte. 156 Bike Path/SV Improvement Committee, the Wastewater Mgmt. Task Force, the Budget process, and soliciting volunteers for our many Boards, Commissions and Committees. Their hard work and support has been greatly appreciated and makes for a better Old Lyme.

Quarterly updates not enough? Please log on to [www.oldlyme-ct.gov](http://www.oldlyme-ct.gov), and get the First Selectwoman's Monthly Newsletter by "subscribing" at the bottom of the home page. And be sure to register for emergency alerts at [www.ctalert.gov](http://www.ctalert.gov) – just in case of an emergency weather event!

Together with the Board of Selectmen, I wish you a summer full of fun, good weather, quality family time and good health.

— Bonnie A. Reemsnyder,  
 First Selectwoman

# LAYSVILLE

## HARDWARE

**A Complete Line of  
Hardware & Paint Supplies**

Power Tools • Kerosene • Lawn & Garden Supplies  
 Gas Grills • Electrical & Plumbing Supplies  
 Builder's Hardware • Blades Sharpened  
 Glass Cut & Window Repairs

**Rentals:** Power Washers • Paint Sprayers • Rug Shampooers

**HOURS**

Monday - Saturday 7am - 6pm  
 Wednesday 7am - 12pm  
 Sunday 8am - 4pm

**860-434-7727**

171 Boston Post Rd, Old Lyme  
[laysvillehardware.com](http://laysvillehardware.com)

Old Lyme Shopping Center  
 Exit 70 off I-95  
 Halls Road, Old Lyme

**Lunch & Dinner  
 Open 7 Days  
 Full Service Bar  
 Late Night Menu  
 Sunday Brunch ~ 10 - 3**

**Friday ~ Jazz Duo  
 Saturday ~ Piano**

**860.434.1455 or 860-434.3335**

**FRESH LOCAL SEAFOOD**

## Connecticut's Mental Health Crisis

A 2012 national survey on mental health and substance abuse estimates that 20% of Americans have had the symptoms of a mental illness while 5% of Americans suffer a severe mental illness such as bipolar disorder, schizophrenia, major depressive disorder or post-traumatic stress disorder. However, 70-90% of those who receive appropriate treatment and support experience a reduction in symptoms. Nationally, Connecticut has lagged behind in mental health access and treatment services for decades. This deficit is critically underscored by the tragedy at Sandy Hook Elementary School.

A recent report from the Connecticut Office of the Healthcare Advocate released its findings and recommendations on mental health services in our state. Among its conclusions:

- Connecticut lacks an overall vision of how to recognize, evaluate and provide services for individuals with mental health and substance abuse needs
- Connecticut's current delivery system for mental health and substance abuse services is fragmented and inconsistent
- Capacity for delivery of services is insufficient for much needed community-based services
- Mental health and substance abuse care largely is not integrated into overall healthcare models
- For the last five years, complaints about access to mental health and substance abuse services have exceeded all other types of clinical complaints



Connecticut must adopt aggressive measures to increase mental health access, attract qualified practitioners, and offer a range of services that includes more community options so that children and adults can access appropriate services in the least restrictive environment.

— State Representative Marilyn Giuliano

*Marilyn Giuliano represents Lyme, Old Lyme, Old Saybrook and Westbrook in the Connecticut General Assembly.*

# CONVERSATION starter

**Q:** When is the best time to talk to your parents about the future?

**A:** There's no time like the present. Today's seniors have more options than ever for retirement living. But the longer families wait to start planning for the future, the greater the risk for a health crisis limiting those options.

**Planning ahead benefits the entire family.**

Chester Village West combines an active and fulfilling lifestyle now, with the assurance of on-site health services if ever needed. Now, you can explore these options with the help of a new interactive program designed to start the conversation today.

An online guide for exploring senior living options with your parents.

Call **860. 532. 0536**

or visit

**www.AConversationStarter.com/CT**

For a schedule of our informational events visit our website  
**www.ChesterVillageWestLCS.com**



317 W. Main Street • Chester, CT 06412  
(860) 532-0536 • ChesterVillageWestLCS.com



## Tax Collector's Notice

Notice is hereby given to the Taxpayers of the Town of Old Lyme that I have a warrant to collect taxes on the Grand List of October 1, 2012. Motor Vehicle taxes are due in full July 1, 2013. Real Estate and Personal Property bills may be paid in full on that date, however, Real Estate and Personal Property bills over \$100.00 are paid in two installments: July 1, 2013 and January 1, 2014. Partial payments are always accepted.

If the tax due, or installment due, is not paid within one month of the due date, the tax becomes delinquent and subject to interest at the rate of one and one half percent (1 1/2%):

18% per year. The minimum interest charge is \$2.00. August interest is 3%.

Questions pertaining to the assessments and exemptions should be directed to the Assessor's office at 860 434-1605 ext 218 or 219. Tax questions at 860 434-1605 ext 216.

Payments may be made at the Tax Office, Old Lyme Memorial Town Hall, 52 Lyme St., weekdays from 9:00 am to 12:00 pm and 1:00 pm to 4:00 pm, by mail: Old Lyme Tax Collector's Office, PO Box 482, Old Lyme, CT 06371.

— Judith A Tooker, Tax Collector

## Old Lyme Conservation Commission

**New State Law Affecting Lawn Fertilizer- Public Act 12-155- effective now!** Without a soil test showing a phosphorous deficiency within the last two (2) years, the application of a fertilizer containing phosphorous on an established lawn is NO LONGER permitted. The fine is \$500!

The application of phosphorous within twenty (20) feet of a body of water (stream, pond, lake) is NOT allowed unless you have special equipment to spread the fertilizer. Then you must keep the phosphorous application 15 feet from the nearest water. Between December first and March 15 the application

of fertilizer to a dormant lawn is prohibited. Note that last year's supply of commercial fertilizer that is still on the shelves in stores should not be used this year if the middle number is anything but zero. Soil scientists tell us that there already is enough phosphorous in our native soils to meet plant needs. They also tell us that one pound of phosphorous (phosphate) can stimulate 10,000 pounds of vegetation in the form of algae. Think about the algae in Rogers Lake last summer.



— George James, Old Lyme Conservation Commission

# COLDWELL BANKER

RESIDENTIAL BROKERAGE



SINCE 1906

**Joshuatown / Cove Estate  
Dock and Boathouse**





**\$2,595,000**

**Sandpiper Point / Riverfront Retreat**





**\$1,825,000**




**Nancy Mesham**  
860-227-9071  
*Previews Specialist*

**22 Library  
Old Lyme Village**




**\$478,000**

**5 Ledgewood**




**SOLD**

**15 Jericho**




**SOLD**

**5 Mt. Archer**




**SOLD**

**15 Hefflon**



**SOLD**



## Proven Success in *Every* Market.

860-227-9071 [nancymesham.com](http://nancymesham.com)

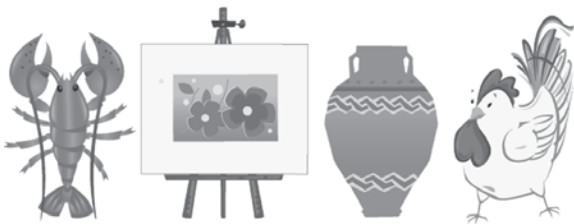


Niantic  
Lions Club

53rd  
Arts & Craft  
Show

35th  
Lobsterfest

Chicken  
Barbeque



July 6 - 7  
10 am - 4 pm

East Lyme  
Town Hall

180 juried artists

nianticartsandcraftshow.com

All Major Credit Cards Accepted

## *Firefighters Burn Foundation*

Bridget A. Yuknat, a fire inspector and board member of the New London Firefighters Burn Foundation will be presenting a power point presentation on Sunday, September 29 at 2:00 pm at the Old Lyme Grange Hall, 55 Lyme Street, Old Lyme. The NL Firefighters Burn Foundation seeks to ease burden for victims.

The Grange will also be presenting membership awards to those members who have reached 25 through 75 year continuous membership!

Any questions about the Grange or the program, please contact Barbara Clark Kulisch, Community Service Chairperson for the Grange at 1-860-669-7780.

## *Lymes Senior Center Summer Concert Series*

Come and enjoy a summer evening at the Lymes Senior Center, 26 Town Woods Road for "Summer Sounds" a four week musical series.

- Thursday, July 11th: High Society, Jazz unit of the Westerly Band. Dixieland and Music of the 1920's.
- Thursday, July 18th: Waterford Community Band
- Thursday, July 25th: String of Pearls Band
- Thursday, Aug, 1st: The Old Lyme Town Band

All concerts start at 7:00 pm. and will be held indoors at the Senior Center. We invite you to stay for the ice cream social at the end of each program. All ages welcome!

## *Beach Passes*

**Beach Passes/Vehicle Stickers** are available at the Selectman's Office, Monday through Friday, 9am – 3pm. Price for a beach sticker is \$25 and \$20 for senior citizens. In addition, weekly cottage renters can request a temporary beach pass for use during their stay for \$25, and we also offer a temporary pass for \$10 for other special circumstances. Please visit the Selectman's Office for details and purchase of these passes.

**Car registration** must always be shown at time of purchase. Additional proof of property ownership is only required if a vehicle is registered to a non-Old Lyme address. Please note: the cost for replacement stickers is \$25 unless the original sticker is returned (regardless of condition).

*For town updates & information:*

**[www.oldlyme-ct.gov](http://www.oldlyme-ct.gov)**

# CENTRAL AIR CONDITIONING

HOUSE SIZE Square Footage	MODEL	TONNAGE	FOR AS LOW AS
850-1000 SF	RAKA024JAZ	2	\$5,100.00
1,000-1,250 SF	RAKA030JAZ	2.5	\$5,350.00
1,250-1,500 SF	RAKA037JAZ	3	\$5,600.00
1,500-1,750 SF	RAKA042JAZ	3.5	\$6,200.00
1,750-2,000 SF	RAKA048JAZ	4	\$6,400.00
2,100-2,500 SF	RAKA060JAZ	5	\$7,100.00

Price Guide for basic complete installation. Two-day installation in most cases.

## MORONI & SON

**860-388-2298**

**Three Generations, over 60 Years  
of Continuous Service!**

*Your Local Ruud Dealer - FREE Estimates*

**447 Spencer Plains Road  
Westbrook, CT 06498**

[www.moronioil.com](http://www.moronioil.com)



HOD# 0000591

# LAWN CARE SERVICES

FERTILIZING • CRAB GRASS CONTROL • WEED PREVENTION  
INSECT & GRUB TREATMENTS • LIMING & SOIL TESTING • AERATION

## GREENSCAPE OF CLINTON LLC,

*offers a quality service tailored to meet your specific needs.  
We use environmentally responsible methods and products.*  
PROGRAMS AVAILABLE FOR ANY LAWN AND EVERY BUDGET.

**GREENSCAPE**  
of Clinton, LLC  
**LAWNS CARED FOR**  
SINCE 1987

**(860)669-1880**

For Your Free Estimate Call Frank Byrne

[www.greenscapeofclinton.com](http://www.greenscapeofclinton.com)



**We Care  
About Your Lawn.**

E# 1997 Commercial and Residential





## Phoebe's BookCellar Operates Year Round



Book sales are a common source of fundraising at many public libraries. Organized by library supporters or "friends" these special events are held yearly, sometimes more often, and book lovers in the area eagerly await the opportunity to score some great reads at a bargain price.

But visitors to Phoebe's BookCellar in Old Lyme don't have to wait for special sales to get these bargain book shopping opportunities, because the BookCellar, run by the Friends of Old Lyme's Phoebe Griffin Noyes Library is open every Wednesday and Saturday, all year long. Here shoppers will find many new and gently used books of all genres. Donated by loyal patrons, reviewed, sorted, and sold by a large group of dedicated volunteers, the books are priced at 25 cents for children's books, 50 cents for paperbacks and \$2 for hardcovers. There are also collector's books with prices beginning at \$5.

In addition to the BookCellar's open hours every Wednesday and Saturday, there are holiday and summer sales that bring the best picks of the large collection up out of the

cellar and into the Library. And every day, bestsellers and seasonal selections are available for sale in the lobby across from the Library's Circulation Desk.

All profits raised by the Friends through the BookCellar go to the Library as part of their \$40,000 pledge of support each year. Donations of all clean books (other than magazines, text and diet books) are always welcome!

## Pet Connections, Inc.

Pet Connections, Inc. is a nonprofit all volunteer organization committed to the rescue, rehabilitation and responsible placement of abandoned and abused animals. We provide medical care, including spaying, neutering and vaccinations. Please call 860-434-4640 if you are interested in joining, fostering or adopting. Please help us to help those who can't help themselves.



*A Complete Home Remodeling Company*

*Storm Damage Repair*

*Insurance Repair Experience*

*Kitchens • Baths*

*Decks • Basements*

*Trim Work • Tile*

*Wood Floors • Additions*

**Erik N. Olsen, Owner 860.434.5605**  
 erikolsenhomeimprovement.com CT Lic#578194



Nicholas J. Fulton  
 Jonathan White  
 Amanda Szajda

**Handling all prearrangement options**

- estimates and consultations at no cost or obligation
- make all the arrangements during a time of peace and not leave them to your family during their time of grief
- make your wishes known
- control the cost of your funeral and protect it from inflation
- protect your insurance so that it provides for your survivors and not for funeral expenses
- explanation of the Title 19 process

Niantic 860.739.7631  
 Old Lyme 860.434.1658  
 New London 860.443.8355  
 www.fulton-theroux.com



## Fondue Season is Still Upon Us



It really doesn't need to be winter with a huge snow storm to enjoy fondue, but that's usually the time when people think about it the most. A picture is conjured up of a warm fireplace, a bubbling pot of fondue, a great glass of wine or your favorite beer, and friends and family to enjoy it all. It's fun, fresh, and elegant to serve. Fondue is the party, at least in my home. When's the last time you had real Swiss fondue?

The name fondue actually comes from the French verb "fonder" which means to melt. Like so many great meals today it began as a simple, peasant food. It was a great way to use up day old bread, opened wine, and leftover, dry cheese. Once heated and mixed together, a great feast was created.

Although there are many variations of fondues available today, I still like the classic Swiss recipe which you can find on our website. It's tried and true and I've been using it for over 40 years. Many will disagree as to the best combinations of Swiss cheeses that should be used but most agree to start with a good, aged Gruyere. Emmentaler, Appenzeller, Challerhocker, and Vacherin Fribourgeois are readily available and should be considered as additions to the mix. These are all very flavorful cheeses from Switzerland which are also great eating cheeses. If you can, try them before you buy and see which ones suit your palate.

The fact that most of the meal is prepared in advance allows you to actually enjoy your own party; you can sit and relax with your guests. The only reason to get up from the table would be to retrieve another bottle of wine. I hear many ask, "Oh, fondue is back?" My answer, "it never left."

— Paul Partica, *The Cheese Shop Of Centerbrook*

**Want to Advertise?**

**Call Betty Martelle at (860) 333-7117**

**IRVING**

**Connecticut Emissions Program**

**147 Boston Post Road**  
**Old Lyme, CT 06371**  
**M-F 7 am - 5 pm ~ Sat 7 am - 12 noon**  
**860-434-2265**  
[www.allproautomotive.com](http://www.allproautomotive.com)

*Got better things to do  
than work out?*

**\$0 ENROLLMENT**  
 17 Liberty Way, Niantic, CT 06357  
 860.691.1611

**ANYTIME FITNESS**  
The club for busy people.

*Open Anytime* [anytimefitness.com](http://anytimefitness.com)



## Parks and Recreation

The Parks and Recreation Office is located in the lower level of the Memorial Town Hall. The phone number is (860) 434 1605 ext 235 and the e-mail address is parkrec@oldlyme-ct.gov. The mailing address is 52 Lyme Street.

2013 Summer Program Registration began on May 1. Program Sign-up forms are available in two ways:

1. Download forms from the Town website; Print & complete a form for each child. Checks are payable to Old Lyme Parks and Recreation. Mail the forms, along with payment, to Don Bugbee, Director, Old Lyme Parks & Recreation, 52 Lyme Street, Old Lyme, CT 06371.

2. Parks and Recreation Program Forms and the Sign-up Area are located in the Lower Level of the Town Hall, at the bottom of the stairs and right outside the elevator door. Completed forms and payment can be left in the dropbox on the table. Checks are payable to Old Lyme Parks and Recreation.

Please note: Program Enrollments may be limited. Program Forms will be available as long as there is room in the Program.

The **Day Camp** will run from Wednesday June 26- Friday August 2. Monday-Thursday 9am - 2pm, Friday 9 am- 12 noon. Playground/Field/Gym Activities; Ages 5 years old (or entering Kindergarten) and older; Program Fees \$150/Child \$200/Family. The Camp will be held at the Lyme/Old Lyme High School Gym. Please note that the Day Camp is available for Old Lyme residents only.

**After Day Camp Program** "Chill out at the Lymes Youth Service Bureau" Monday-Thursday 2-5 pm. For all sign-up information, contact Missy @ 860 434 7208.

**Wildcat Baseball Camp** is directed by LOLHS Baseball Coach Randy St. Germain 860 434 5882; Camps will be held at Cross Lane Park Little League Field. Wednesday-Saturday June 26-29. Raindate Sunday June 30; Session 1: 9 am-12 noon, ages 7-9; Session 2: 12:30-3:30 pm, ages 10-12; Fee \$85 Child/\$65 each additional sibling.

**Wildcat Softball Camp** is directed by Kristen St. Germain saintgol@comcast.net; Camps will be held at Town Woods Park. Wednesday-Saturday June 26-29. Raindate Sunday June 30; Session 1: 9 am-12 noon, ages 7-9; Session 2: 12:30-3:30 pm, ages 10-12. Fee \$85 Child/\$65 each additional sibling.

**Basketball Clinics** are directed by LOLMS Girls Basketball Coach Tim Gavin (860) 434-7668, (860) 227-6865, tggw@comcast.net; All Clinics will be held at the Middle School Gym.

**Wildcat Girls Basketball Clinic:** Incoming Grades 3-7; Monday - Friday, July 15-19, 9 am - 1 pm, Middle School Gym. Fee \$90/\$80 each additional sibling; **Wildcat Boys Basketball Clinic:** Incoming Grades 3-7, Monday - Friday, July 22-26, 9 am - 1 pm, Middle School Gym. Fee \$90/\$80 each additional sibling.

*continued on page 17*

### LAW OFFICES OF GREGORY P. CARNESE, LLC



*The Shoreline's choice  
for personal and professional  
legal services.*

44 Lyme Street • P.O. Box 392  
Old Lyme, CT 06371  
phone: 860.434.9440  
fax: 860.434.8632  
oldlymelaw@sbcglobal.net  
www.oldlymelaw.net

## AEGEAN TREASURES



**SUMMER IS HERE!**  
*It is all about  
tunics, tops and  
fresh looking dresses*

- Sale to Sable
  - Before and After
  - Dizzy Lizzy
  - Eileen Fisher
  - Connie Roberson
  - Roberta Roller Rabbit
  - Gretchen Scott
- And Much More!*

49 Main Street, Essex, CT 06426  
**860.767.1688**

## Assessor's Office

The Assessor's Office reminds residents of Tax Relief for renters age 65 years old or totally disabled. Those Renters Rebate applications must be filed from 5/15/2013 to 9/15/2013 at the Social Services Department located at the Lyme's Senior Center. Renters must provide proof of income, disability, and utilities paid; these utilities include gas, electricity and water. To make an appointment or for more details, please call the Senior Center @ 860-434-4127.

Personal Property forms will be mailed at the end of September. Forms are due on or before 11/1/2013. A 25% Penalty is imposed on the assessed value if postmarked after 11/1/2013.

In order for new residents in town to have their Veteran's Exemption on their properties; they must file their DD214 (Discharge papers) with the Town Clerk before October 1, 2013.

Anyone interest in applying for Farm, Forest and Open Space must file an application (available in the Assessors office) and present it to the Assessor between September 1st and October 31st, 2013.

Those who were sent Income & Expense forms (I&E) must have them filed in the Assessor's Office by on or before June 1, 2013 or they will receive a 10% PENALTY.

Any questions, contact 860-434-1605 Ext.218 Walter E. Kent, Jr. Assessor or Ext. 219 Mickie Fraser, Administrative Assessment Technician. Office hours are Monday through Friday 9 am to 4 pm.

• **Park & Recreation continued from page 16** •

**Youth Elite Soccer (YES) Camps** are held at Town Woods Park and directed by YES Staff Monday - Friday, August 12-16; Recreational Programs, ages 3-4, 9-10:30 am or 10:30 am-12 noon. Fee \$70; ages 5-6, 9-10:30 am or 10:30 am-12 noon. Fee \$70; ages 7+ 9am -12 noon. Fee \$105. Sign-up forms for Soccer Camp are available at the Old Lyme Town Hall or at [www.youthelitesoccer.com](http://www.youthelitesoccer.com).

**Tennis Camp.** Directed by Alyssa Hoynack (860) 304-2774; Camps held at District 18 Tennis Courts. Fee \$55 per weekly session. Monday-Friday, July 8-12 and August 5-9; Session 1: 9-10:30 am, ages 5-9; Session 2: 10:30 am -12 noon, ages 10+.

**All Rowing Sessions** are held at Rogers Lake. For detailed information and on-line sign-ups only. Visit [www.oldlymerowing.org](http://www.oldlymerowing.org).

**White Sand Beach and Hains Park:** Current Town of Old Lyme Beach Stickers are required to park. Parking Attendants on duty weekends only starting May 18; 7 days per week, 9 am-8 pm from June 15-September 2. Lifeguards on duty 7 days per week, 10 am-5 pm from June 15-September 2.

**Sound View Parking Lot:** Parking Attendants on duty 7 days per week Memorial Day, Weekend-Labor Day; Residents with current Town of Old Lyme Beach Stickers park free; Weekdays All Vehicles \$20; Weekends/Holidays All Vehicles \$25.

CT License  
E1-123441

# SICURANZA ELECTRIC, LLC



John Sicuranza  
Owner / Electrician

[www.SicuranzaElectric.com](http://www.SicuranzaElectric.com)  
email: [seco4343@aol.com](mailto:seco4343@aol.com)

## 860-434-4343

Specializing in all Residential  
& Commercial work

- |  |  |
|--|--|
| <input checked="" type="checkbox"/> Service Upgrades     | <input checked="" type="checkbox"/> Troubleshooting    |
| <input checked="" type="checkbox"/> Generators           | <input checked="" type="checkbox"/> Network Cabling    |
| <input checked="" type="checkbox"/> Surge Supressors     | <input checked="" type="checkbox"/> Landscape Lighting |
| <input checked="" type="checkbox"/> Smoke / CO Detectors | <input checked="" type="checkbox"/> Marine Wiring      |



BENJAMIN MOORE®  
transform



Buy 1 Pint Color Sample, Get 1 FREE\*

Available in every Benjamin Moore® color.  
Offer expires  
June 29, 2013

\*Promotional only at retailer listed above. Certain exclusions apply. Subject to availability. Retailer above reserves the right to cancel this offer at any time. Limit one offer per customer. While supplies last. Only original offer will be honored. No photocopies or fees will be allowed. © 2012 Benjamin Moore & Co. Benjamin Moore, Color Selection Simplified and the triangle "M" symbol are registered trademarks licensed to Benjamin Moore & Co.



This offer can only be redeemed at  
The PAINT Shop  
59 Main Street  
Old Saybrook  
860-388-2345



Save  
With this coupon



## A Killer Lawn

It's that time of year again. The lawn looks dead after all you did to make it lush and verdant last year, the envy of the neighborhood. You mowed it thirty-three times, spent over \$300 on fertilizer and pesticides, another \$55 for fuel for the brand new sit-down mower you purchased, and \$24 on Rhode Island grass seed and fertilizer to repair the bare spots. And now it looks dead!

Biologically, it is dead. The chemicals in those bags you bought last year contained chemical fertilizer with a heavy dose of nitrate plus weed killer, wide spectrum insect killer, clover killer, nematode killer, grub killer, various seed killers, etc. The soil was made barren and depends on those bags you buy to keep it barren and deadly to those natural "enemies" of your perfect lawn. The chemicals may also make your children and pets sick as well the birds and animals that come in direct contact with that lawn. High nitrate levels in the soil in the beach communities is the reason the DEEP is issuing pollution abatement orders and ordering sewers, yet that bag of fertilizer you spread on your lawn four or more times last season probably contained 30% or more of nitrates. Actually, only about five percent of that nitrate can be used by the grass. The rest seeps into the ground (eventually into your well) or is washed away into the nearest water body where it does some more killing of a wide range of aquatic life.

The Old Lyme Conservation Commission opposes the use of pesticides in general as a hazard to the health of the community,

especially our children. We oppose the use of chemical treatment of lawns specifically and recommend the organic approach instead. Here is what we specifically recommend:

1. Reduce the size of your lawn by planting perennial gardens and shrubs instead.
2. Get a soil test to determine what, if any, additives your soil needs to grow grass. Email UCONN for more info.
3. Buy the perennial grass seed that is best suited for each part of your property. Add clover seed to the mix as clover provides nitrogen to the grass roots.
4. Compost your leaves, grass clippings, etc. and use the rich soil produced as top dressing for the lawn and garden.
5. Water deeply once a week. Install rain barrels to supply added water for the lawn.
6. Seek professional advice from organic experts when confronted with specific insect and weed problems.
7. Raise the cutting bar on your mower to three inches. A one inch cut exposes the grass to drying out and dying. Leaving the grass clippings on the lawn provides most of the nitrogen the grass needs or save the bag of clippings for the compost pile.

Please note: A new state law (12-155) that prohibits the use of a fertilizer containing phosphorous near water bodies is now in effect. A \$500. fine is imposed on violators. A pound of phosphorous fertilizer can produce 10,000 pounds of algae in water bodies like Rogers Lake!

### Christian Health Care

Kathryn (Petsy) Parmelee

Certified Nurse Aide

860.335.2257

Haddam, CT

plighthouse@gmail.com



### Titus 3 Mission Statement

Honest & Trustworthy Companionship

**"doing the right thing, at the right  
time, for every client"**

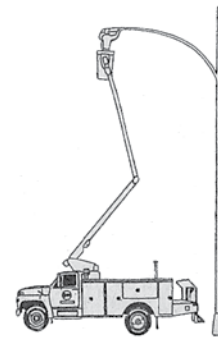
Compassionate Quality In-Home  
Care for ALL in Need



## ZELEK ELECTRIC CO.



- BUCKET TRUCK SERVICE
- MOTOR CONTROLS
- COMPUTER NETWORKS
- LANDSCAPE LIGHTING
- TELEPHONE WIRING
- GENERATOR INSTALLATIONS  
SALES & SERVICE
- UNDERGROUND WIRING
- FIRE ALARM SYSTEMS
- LIGHTING CONSULTANT
- TROUBLE SHOOTING
- SOLAR ELECTRIC SYSTEMS



CT LICENSE #103314

**RESIDENTIAL • COMMERCIAL  
MARINE • INDUSTRIAL**

**"BIG ENOUGH TO DO THE JOB,  
SMALL ENOUGH TO CARE"**

**860-434-9726**

OLD LYME, CT

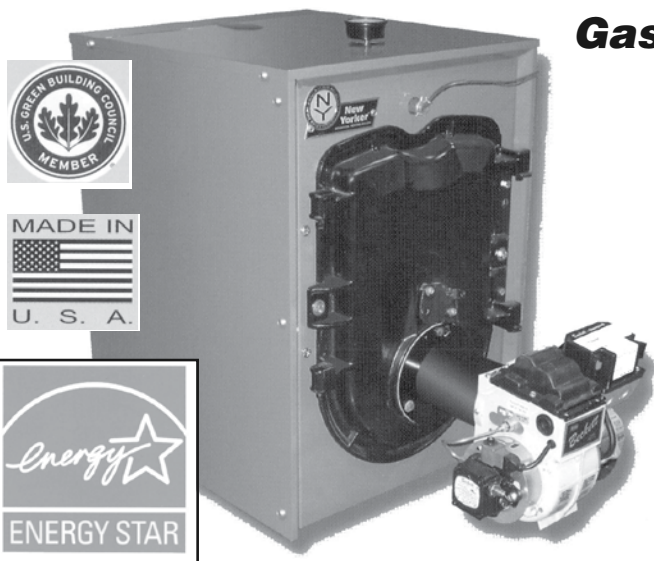
# **OIL - THE SMART CHOICE**

**Avoid the "Free Gas Line" to your house.  
"Nothing is Free"**

**Once the Free gas pipe is in your home  
you will spend \$8000 to \$10,000  
for new gas equipment.**

**Natural gas prices are NOT fixed.  
Only one supplier. Prices go \$up \$up \$up!**

**Gas is not the best choice.**



**CAST IRON BOILER**  
100,000 BTU with 40 gallon indirect  
water storage tank.

Complete Installation: all materials and  
labor for the low cost of \$5700.00.

Worried about the age of your Oil Tank?  
We can install a new 275 gallon tank  
and remove your old tank with  
installation of your new  
cast iron boiler.

All for ONLY \$1,100.00 more.

- 86% AFUE • 3-Pass Cast iron Heat Exchanger
- Fully-opening Cast Iron Swing Door
- Easy to Install, Maintain and Service
- Packaged... Saves Labor • Compact Footprint
- Lower Water Content • Made in America



**High Efficiency 3-Pass Oil-Fired Water Boiler**



## **LIGHTHOUSE OIL**

**Your Guiding Light To Fair Priced Oil**

Expert Service · Quality Installations · Friendly, Personable Staff  
Over 1200 Customers · Celebrating our 8th Anniversary

# **860-767-3396**

**447 SPENCER PLAINS ROAD, WESTBROOK, CT 06498**



## Caliber Computing

Charles E. Delinks, Jr.  
www.calibercomputing.com

### Computer Systems & Networks

- Virus & Spyware Removal
- DSL & Cable Broadband
- Network & Email Configuration
- Sales, Installations & Upgrades

20 Homestead Circle  
Old Lyme, CT 06371  
(860) 434-1926 phone/fax  
(860) 823-9250 cell  
ced@calibercomputing.com

## Lymes' Youth Service Bureau

**BEACH DANCES.** Every Tuesday 7:00-9:00 pm, starting July 2nd at White Sands Beach for middle schoolers in Lyme and Old Lyme. \$5/admission – music, food, fun, friends. Weather permitting, please check our website for possible cancellations due to weather.

**CHILL OUT AT LYSB.** Monday through Thursdays, 2:00-5:00 pm. June 26 – August 1. Chill out at the LYSB after park and rec! Children will be walked from park and rec day camp to the LYSB where they can hang out with their friends, play basketball, watch movies, games, art and crafts and much more. Snacks will be provided. This program is \$40 per week. This program is open to any Lyme/Old Lyme resident even if not participating in the park and rec day camp. Contact LYSB to pre-register at 860-434-7208 x0.

**LUNCH BUNCH WITH MAD SCIENCE.** Fridays 12:00 noon-2:00 pm. Ages K-6th grade. Fee: \$20 per day or all three \$ 55. July 12th – Detective Science; July 19th - Space; July 26th – Che-Mistry. Bring a bag lunch. Kids from Park & Rec will be escorted to LYSB. Contact LYSB to pre-register at 860-434-7208 x0. Space is limited.

**PLAYGROUPS: Babies and Ones.** Tuesdays July 9 through August 6, 10:00-11:30 am. Fee: \$40 for the five week session. Weekly playgroups for children up to age 2ish with a caregiver. Playtime, snacks, songs, crafts, and outdoor time. Siblings welcome. Open forum for parents and children to come together at Mimi's Place our child friendly building with adjacent playground for children to share interests and ideas. Strengthen your parent/child bond while enjoying the company of other parents. Encourage your child's awareness of self and others while developing motor skills, problem solving, personal-social, and social emotional skills. Your child will gain social and literacy skills for preschool and beyond. Space is limited. Pre-register by calling 860-434-7208.

**PLAYGROUPS: Ages 2 and up.** Meets on Wednesdays and Thursdays at morning and afternoon times, check our website for specific times. Fun Themes each Week. At LYSB's Playgroups, children and their caregivers enjoy playtime, snacks, songs, crafts, and outdoor time. Siblings always welcome. Make new friends at LYSB in our air conditioned Mimi's Place. Space is limited. Contact LYSB to pre-register at 860-434-7208 x0. Pick and choose the dates that work for you! Fee: \$10 per family per date. More info on our website www.lysb.org. **July 10:** Monkeys; **July 11:** Snow Day; **July 17:** Farm; **July 18:** Pirates; **July 24:** Ice Cream; **July 25:** Magical Wands; **July 31:** Bubbles; **August 1:** Chalk.

**1-2-3 MAGIC: Effective Discipline for Children 2-12.** Tuesday July 9 & 16, 6:30-8:30 pm. Parents! Who's in charge at your house? A humorous look at parenting, a serious look at discipline. In this two part workshop you will learn:

- How to discipline without arguing, yelling or spanking.
- How to control obnoxious behavior.
- How to handle the 6 kinds of testing and manipulation.
- 5 tactics for encouraging good behavior.
- What to do about bedtime, messy rooms, lying & chores.
- Homework, practicing and more.
- How to strengthen your relationship with your child.

Lymes' Youth Service Bureau offers 1-2-3 Magic to help parents find solutions to the challenges of disciplining children ages 2-12. This program is based on the best-selling book and the group will be led by Arleen Sharp, LYSB Parent Educator. Contact LYSB to pre-register at 860-434-7208 x0. Fee: \$20 per family.

**BEACH BLANKET BINGO.** Thursday, July 18, 6:00-8:00 pm at White Sands Beach. Price: \$5 per person or \$20 per family. Pizza dinner is included. Please join us at the beach for an evening of family fun and bingo! Prizes will be awarded to winners. Make sure to bring your beach blanket, bug spray and your appetite! Event will be postponed in the case of inclement weather. Please check our website www.lysb.org prior to event for possible weather cancellation.

*continued on page 21*



## Old Lyme Visiting Nurse Association, Inc.

At time of hospital discharge or  
whenever in need of homecare  
services, please call

**860-434-7808**

or

**860-434-9003**

Homecare license via Interim  
Health Care of Eastern Connecticut



• *Youth Service Bureau continued from page 20* •

**KINDNESS CLUB.** Monday, July 29 through Thursday, August 1, 10:00-11:30 am. Fun hands-on community awareness projects appealing to children of all ages and abilities. Donations greatly appreciated to cover the cost of projects. All activities take place at LYSB. **Projects:** Homemade Dog Bones – Animal Shelter; Children’s “Create Box” of craft supplies – Women’s Shelter; No Sew Blankets – Women’s Shelter; Sweets for Seniors – LOL Senior Center. Contact LYSB to pre-register at 860-434-7208 x0.

**SITTER / SAFETY CLASS.** Monday, July 29 through Thursday, August 1, 1:00-3:00 pm. For grades 6 and up. Fee: \$40 includes supplies, snacks, guest speakers. This is an intense sitter safety training course that is appropriate for babysitters, big brothers and sisters, and children staying at home alone for the first time. This course will teach a variety of safety issues, basic first aid, fire safety, 911 skills. Contact LYSB to pre-register at 860-434-7208 x0.

**CPR FOR BABYSITTERS.** Friday, August 2, 1:00-3:00 pm. Add this valuable class to your LYSB babysitter’s course and learn how to save a life! Learn CPR and how to clear a blocked airway in children and infants. Parents want to hire babysitters who know CPR and can help kids who are choking! This class is a must for anyone who cares for children...parents, grandparents & babysitters. Local AHA instructors, EMTs and EMSIs Doug Lo Presti and Colleen Atkinson will teach you everything you need to know to provide lifesaving care during a cardiac or choking emergency in this 2-hour class. Class cost is \$40 and awards a Certificate of Completion. Contact LYSB to pre-register at 860-434-7208 x0.

**ARTS & CRAFTS CAMP.** Monday, August 5 through Friday, August 9, 9:30 am-12:00 noon. Ages 7 and older. Let’s get creative, make new friends and learn new and exciting art techniques! In this week long class, children will explore a variety of high quality craft activities and enjoy the outdoors. Mold a beautiful bowl with self hardening clay, design colorful tie/dye shirts, learn mosaic techniques, create papier mache critters and draw and paint “plein air.” Join your friends for a fun and crafty time! Drawing, outside time, and snacks each day. Fee: \$150, includes all supplies. Led by arts educator Claudia Mathison. Contact LYSB to pre-register at 860-434-7208 x0.

**HIP HOP HIGHLIGHTS.** Monday, August 5 through Friday, August 9, 1:00-3:00 pm. Fee: \$40 includes snacks. The Lymes’ Youth Service Bureau is pleased to offer a new and exciting program for boys and girls in grades 3 and up. During the week students will learn a choreographed hip hop dance routine to new and popular music! This routine will be performed for family and friends on the last day! Space is limited, and this program is sure to be a blast, so please call LYSB at 860-434-7208 to register.

**LEGO CAMP AT LYSB.** Engineering FUNDamentals; Pre-Engineering Ages: 5-7. Monday, August 12 to Friday, August 16, 9:00 am-12:00 pm. Let your imagination run wild with over 100,000 pieces of LEGO®! Build engineer-designed projects such as boats, bridges, mazes and motorized cars, and

*continued on page 23*

# BALLEK’S GARDEN CENTER



**Call Now For The Garden Of Your Dreams!**

**FULL SERVICE GARDEN CENTER**  
Great Selection of Annuals, Perennials, Trees & Shrubs

**FULL SERVICE FLORIST**  
Gardening Gifts, Fresh Cut Flowers, Bloomnet

**LANDSCAPING**  
Walls, Walks, Patios, Tree and Garden Installation

**OPEN YEAR-ROUND**

**860-873-8878**

Maple Avenue, East Haddam, CT  
[www.BalleksGardenCenter.com](http://www.BalleksGardenCenter.com)



**SAPIA BUILDERS, LLC**  
[www.sapiacorp.com](http://www.sapiacorp.com)



General Contractors, Custom Homes,  
Additions, Renovations & Remodels

Essex, CT  
860-304-8383

## Midsummer Festival

**Friday, July 26 Free admission and Free Concert.** The evening begins with receptions at the Lyme Art Association, the Lyme Academy College of Fine Arts, and the Florence Griswold Museum from 5 to 7 pm, all with free admission. The annual free concert from 7-9 pm at the Florence Griswold Museum is always a favorite and makes for a perfect summer evening on the banks of the Lieutenant River. Concertgoers are encouraged to bring a picnic dinner. This year, Poor Old Shine will rock the river with music rooted in folk and Appalachian mountain traditions. It's foot stomping, mind racing, bluegrass like you've never heard before.

**Saturday, July 27.** Old Lyme's Midsummer Festival, a highly anticipated summer event, is a town-wide celebration of the arts. Since the early 20th century Old Lyme, Connecticut has been known to artists and art lovers alike as a haven for the arts. This quintessential New England celebration for all ages takes place in the heart of Old Lyme's historic district, with activities spanning locations along Lyme Street – the Florence Griswold Museum, the Lyme Art Association, and the Lyme Academy College of Fine Arts. This year, the festivities continue at the Old Lyme Inn, Studio 80 + Sculpture Park, and a variety of Lyme Street merchants. For more information visit [www.OldLymeMidsummerFestival.com](http://www.OldLymeMidsummerFestival.com). A favorite event of the day is Market En Plein Air at the Florence Griswold Museum.



*Midsummer Festival (the Museum's Market en Plein Air)*

This outdoor market features Connecticut-grown flowers, fruits, vegetables, breads, fine cheeses, herbs and specialty foods in a setting modeled after outdoor markets in French villages. Crafted-by-Hand: An Artisan Fair features noted jewelry designers and other craftsmen from across the state.



ESSEX FAMILY DENTISTRY



*Celebrating 10 Years of  
beautiful smiles in Essex!*

Peter Turtoro, DMD  
Melissa Donofrio, DMD

Tour our brand new,  
state of the art facility at  
66 Plains Road, Essex, CT 06426

*Come Join Our Family!*

860.767.9403

[essexfamilydentist@sbcglobal.net](mailto:essexfamilydentist@sbcglobal.net)  
[www.essexfamilydentistry.net](http://www.essexfamilydentistry.net)

## Town Hall Schedule

Town Hall will be closed in observance of the following Holidays:

Thursday, July 4 – Independence Day

Monday, September 2 – Labor Day

Monday, October 14 – Columbus Day

Monday, November 11 – Veterans Day

Thursday & Friday, Nov 28 & 29 – Thanksgiving

Wednesday, December 25 - Christmas

## Help Wanted Sales Associate

Events Magazines is seeking a part-time sales representative; full commission, flexible hours and friendly working conditions. Please fax your resume to Events Magazines 860-767-0259 or email [sxprinting@yahoo.com](mailto:sxprinting@yahoo.com).

• *Youth Service Bureau continued from page 21* •

use special pieces to create your own unique design! Explore the endless creative possibilities of the LEGO® building system with the guidance of an experienced Play-Well instructor. Contact LYSB to register at 860-434-7208. Fee: \$150.

**Engineering Fundamentals Ages: 8-11.** Monday, August 12 to Friday, August 16, 1:00 pm -4:00 pm. Power up your engineering skills with Play-Well TEKnologies and over 100,000 pieces of LEGO®! Apply real-world concepts in physics, engineering, and architecture through engineer-designed projects such as arch bridges, skyscrapers, motorized cars, and the Battletrack. Design and build as never before, and explore your craziest ideas in a supportive environment. An experienced instructor will challenge new and returning students to engineer at the next level. Contact LYSB to register at 860-434-7208. Fee: \$150.

**FAMILY MOVIE NIGHT.** Thursday, August 8th at 7:30 pm. Please join us for an outdoor family movie night. Please bring beach chairs and/or blankets to be comfortable. This is a free event, but donations are welcome! Snacks will be sold. Location and Movie TBA, so please check our website for announcement and weather related cancellation. [www.lysb.org](http://www.lysb.org).

**HOLISTIC MOMS NETWORK.** Living Healthy, Living Green. For parents at all stages of parenting who are interested in green living and holistic health, open to all area residents.

- Tuesday, June 11, 7 pm, topic tba
- Tuesday, July 9, 7 pm, topic tba
- Tuesday, August 6, 2013, 7 pm – Garden Swap and Food Pantry

Visit our website for complete details about Holistic Moms Network! [www.lysb.org](http://www.lysb.org)

**YOGA FOR TEENS & ADULTS.** Thursdays 7:00-8:00 pm, year round. Taught by Joanie Fitton. \$10 a class, drop in. Relax and restore your mind, body, and spirit. Wear comfortable clothing and bring a mat.

**JOB BANK.** Do you need help with your lawn? Need a new babysitter? Have odd jobs waiting for attention? Call the LYSB Job Bank for names of area youth interested in working for you at 860-434-7208. Kids who want to be listed in the Job Bank need to register at LYSB with a Job Bank Application form. For middle and high school youth ages 12 to 18.

— Mary V. Seidner, Director, Lymes' Youth Service Bureau

## MARK REEVES, BUILDER

860-388-3825

*Lets get those spring projects underway*

NEW HOMES  
WHOLE HOUSE REMODELS  
ADDITIONS  
KITCHENS  
BATHROOMS



BASEMENT CONVERSIONS  
SIDING & WINDOWS  
ENTERTAINMENT CENTERS  
FLOORING  
GENERAL REMODELING

MARKJREEVESBUILDER@COMCAST.NET  
**WWW.MARKREEVESBUILDER.COM**  
CT LICENSE # 538583 & 10263 FULLY INSURED

# IBB'S AUTO SERVICE

*Family Owned & Operated  
10 Years Servicing the Shoreline Area*

### Maintenance Services

- Brakes • Tires • Suspension
- AC Service & Repair
- Oil Change Service
- Engine & Transmission Repair
- **Motorcycle Repair & Maintenance**
- Shuttle Service
- Free Coffee in Waiting Room

**Quality Repair by People Who Care!**



1379 Boston Post Road  
Old Saybrook, CT  
fax 860-395-1290  
[www.ibbsservice.com](http://www.ibbsservice.com)  
*Located behind Action Sports*

**860-395-1669**



## Florence Griswold Museum

**June 8 - September 22.** *Animal/Vegetable/Mineral: An Artists Guide to the World* brings together iconic works from the Museum's collection with works by contemporary artists to investigate three recurring themes in the history of American art: the animal, the vegetable, and the mineral.

**Café Flo Opens June 1.** Beginning June 1 garden lovers are invited to enjoy Café Flo Tuesdays and Saturdays from 11:30 am-3 pm and from 1-4 pm on Sundays. Menu items are garden-fresh and family friendly. Dine on the veranda overlooking the Lieutenant River or pick up a basket and blanket and picnic along the river.

**June 7-16. GardenFest.** The fifth annual GardenFest at the Florence Griswold Museum in Old Lyme is a ten-day celebration of the site's historic gardens, featuring special events, garden tours, demonstrations, and family activities. From June 7 through June 16, visitors can enjoy a wide variety of activities for all ages and interest levels. Most events are free with Museum admission. Visitors to the Museum understand immediately the site's appeal to the artists who stayed at "Miss Florence" Griswold's boardinghouse over a century ago. Her house, gardens, and river view were favored subjects of her artistic boarders.



*Museum Gardens, Florence Griswold Museum*

GardenFest features Blooms with a View (June 14, 15, 16) a group of talented floral artists display the stunning arrangements that interpret works of art. The floral interpretations in this third annual Blooms with a View play off the colors, line, shapes, and subject matter of the works that inspired them in masterful ways.

**Garden Luncheon Supports the Preservation of the Museum's Landscape.** On Friday, June 14, guests enjoy touring the gardens, *Blooms with a View*, and the Museum's current exhibition *Animal/Vegetable/Mineral: An Artists Guide to the World*. At noon, a lunch by Gourmet Galley will be enjoyed overlooking the Lieutenant River. Light jazz by the Tangerine Trio. Festive garden party attire and hats encourage. There is an additional fee for this event of \$100 and reservations are required. The Luncheon is sponsored by Wilbur & King and supports the stewardship and preservation of the Museum's historic gardens and riverside landscape. [FlorenceGriswoldMuseum.org](http://FlorenceGriswoldMuseum.org) for more information.

**Connecticut's Historic Garden Day.** Connecticut's Historic Gardens announces the tenth annual Connecticut's Historic Garden Day, Sunday, June 23. These fourteen delightful places, scattered throughout Connecticut, offer visitors an opportunity to explore many types of gardens while their historic homes further delight and educate. A variety of special events and activities are planned for the day. Hours, activities, and prices vary by location. Check [www.cthistoricgardens.org](http://www.cthistoricgardens.org) for more details. At the Florence Griswold Museum, outdoor activities are free from 1-5 pm. Visitors are invited to stroll through "Miss Florence's" historic gardens and watch members of the Connecticut Society of Portrait Artists as they work on paintings featuring models posed in the gardens and along the river. Painting materials will be supplied so that visitors can try their hand at creating their own masterpieces. Families can go on the new garden scavenger hunt. Museum admission applies to House and galleries, \$10 adults, \$9 seniors, \$8 students and children 12 and under are free.

# BOMBACI MULCH



## Firewood & Compost

## ORGANIC LANDSCAPE MULCH

# \$23

PER  
YARD

SAVE \$1  
PER YARD  
WITH  
THIS AD

Delivery Available

# 860-767-8501

45 Plains Road, Essex, CT



*Blooms with a View, Florence Griswold Museum*

## Oregon Wines

Spring into warmer weather with light, bright and savory wines from Oregon. Oregon produces several different styles of light and refreshing whites. Chardonnay, Gewürztraminer, Riesling and Pinot Gris are the most widely grown varieties. One of the most sought after, Pinot Gris, is the same as the Italian Pinot Grigio grape, however from Oregon it tends to have more body with the same great acidity. The Rieslings are fruity with a slightly sweet edge to them. Due to the cooler climate, most of them tend to have a bit more acidity in the finish which makes them pair nicely with spicy dishes.

The top producing red variety from Oregon is by far Pinot Noir, followed by Gamay Noir. The cool climate is the ideal condition to grow Pinot Noir, much like its birthplace in Burgundy, France. This variety brought notoriety to Oregon in the mid-seventies from wine lovers all over the world, though they have been producing other varieties since the mid-late 19th century. Pinot Noir has complex flavors while showing a light body and occasionally an earthy finish. The flavors most often noted are cherry/black cherry and blackberry. Due to its complexity Pinot Noir can be enjoyed with a wide variety of food choices spanning from light appetizers to heavier fare and meat dishes.

Prepare your palate for the warmer days ahead by venturing out and trying a few of these savory, mouth-watering wines from the west coast. They will be sure to please both you and your guests!

— Art LiPuma, Manager, SeaSide Wine & Spirits



# 9 TOWN TRANSIT

New Service in Haddam!

Public Transportation for all ages serving  
Chester, Clinton, Deep River, Essex,  
Haddam, Killingworth, Lyme, Old Lyme,  
Old Saybrook & Westbrook

Connections to Southeast Area Transit buses in New London,  
CT Transit New Haven in Madison, Middletown Transit  
and CT Transit Hartford in Middletown

Call 860.510.0429

www.9towntransit.com




9 Town Transit is Operated by the  
Estuary Transit District



## PREMIER PAINTING

Custom Finishes with an Eye for Detail  
Interior / Exterior  
Residential / Commercial  
New Construction / Fully Insured

- FREE ESTIMATES -  
Peter Dohna

(860) 526-8236



**Bogaert**  
CONSTRUCTION CO., INC.

60 PLAINS ROAD, ESSEX, CT 06426  
860.767.8072



- Custom Homes
- Additions
- Full Remodeling Services
- Window Replacement

Fully Insured  
New Home Lic. #170  
Remodeling Lic. #523107  
[www.bogaertconstruction.com](http://www.bogaertconstruction.com)

## Trash & Recycling Information

**Curbside trash removal** is performed by Shoreline Sanitation (860-434-0052). There is no trash pick-up on the following Holidays: New Year's Day (January 1), Memorial Day (last Monday in May), July 4th, Labor Day (first Monday in September), Thanksgiving Day (fourth Thursday in November), and Christmas Day (December 25). Trash that would normally be collected on Thanksgiving will be picked up the next day, along with the regular Friday pickup. For Monday holidays, garbage pickup will move up a day, except on Thursday and Friday, which will remain on schedule.

Please have trash container out at curbside by 6 am on your assigned day. Containers should be three feet away from any other objects, such as mailboxes, cars, other containers, planters, etc. Please do not block breakdown/emergency lane or obstruct walkers and/or cyclists. Thank you!

Additional automated trash containers should be ordered through Michele Hayes-Finn (860-434-1605, ext. 212) in the Selectman's Office at the Memorial Town Hall on Lyme Street. Containers cost \$80.

**Recycling Holidays are:** Curbside recycling is performed every other week by Shoreline Sanitation (860-434-0052). There is no recycling pick-up on the following Holidays: New Year's Day (Jan. 1), Memorial Day (last Monday in May), July 4th, Labor Day (first Monday in Sept.), Thanksgiving Day (fourth Thursday in Nov.), and Christmas Day (Dec. 25). Recycling that would normally be collected on Thanksgiving will be picked up the next day, along with the regular Friday pickup. For Monday holidays, recycling pickup will move up a day, except for Friday, which will remain on schedule.

Please have recycling container out at curbside by 6:00 am on your assigned day. Containers should be three feet away from any other objects, such as mailboxes, cars, other containers, planters, etc. Please be mindful when positioning your container not to block breakdown/emergency lane or obstructing walkers and/or cyclists. Thank you!

**Single Stream Curbside recycling** pick-up is provided for clean bottles, cans, #1 - 7 plastics and paper products co-mingled in the new green recycling carts. Corrugated cardboard boxes need to be flattened for recycling. A complete list of acceptable single stream recyclables are available on the Town's website ([www.oldlyme-ct.gov](http://www.oldlyme-ct.gov)), trash and recycling link on both the Selectman's and Public Works pages, as well as on Shoreline Sanitation's website ([www.shorelinesanitation.com](http://www.shorelinesanitation.com)) and in the Selectman's Office at Memorial Town Hall on Lyme Street, or at the Landfill/Transfer Station. Please phone Michele Hayes-Finn (860-434-1605, ext. 212) with additional questions.

**Transfer Station Hours** are Tuesday-Friday, 7:30 am-3:45 pm, Saturday, 8:30 am-4:00 pm. Closed Sunday and Monday. Transfer Station is located on Four Mile River Road, Exit 71 off I-95N (860-434-2337). Bulky Waste and Demolition: Vehicles will be charged by weight at a 110/ton rate. Recyclables should not be mixed in the same load with Bulky Waste or Demolition debris. Load of less than 100 lbs will be charged a minimum fee of \$5. Brush will be charged on a per load basis. Grass clippings are not accepted. Please phone either the Transfer Station or Michele Hayes-Finn (860-434-1605, ext. 212) with additional questions.

**Phone Michele Hayes-Finn** in the Selectman's Office at the Town Hall (860-434-1605, ext. 212) to report a streetlight outage and/or trash or recycling problem. When reporting a streetlight, please make note of the pole#.

**2013 Household Hazardous Waste** located at Estuary Region Hazwaste Facility on Dump Road, Essex. Directions from Route 9 driving north: Take Exit 4, go straight across Route 154, over the railroad tracks and up the hill. Scheduled dates are Saturdays between 9am - 1pm on the following dates: June 1, 22, July

*continued on page 27*

**ECOSTEAM**<sup>®</sup>

Environmentally Focused Solutions  
for Restorative Cleaning<sup>®</sup>

- CARPETS
- TILE • DRAPES
- FURNITURE
- STAIRS

Try our Service...  
See Why  
Our Customers  
Love Us

**\$50 off**  
New Customers Only

This offer is restricted to homeowner occupied properties.  
This discount cannot be used in combination with any  
other gift certificates, volume discounts, or reduced offers.  
Minimum charges will apply.

**860-388-2500**  
[www.ECOSTEAM.com](http://www.ECOSTEAM.com)

**A Local Family Owned Business**



## Essex Printing Winner In New England Regional Awards of Excellence Competition



The announcement was made April 4 during PINE'S Industry Awards Gala with hundreds of industry professionals in attendance. PINE'S Awards of Excellence Competition attracts over 200 entries from 41 printing and imaging companies across New England competing in a variety of printing and graphic communications categories.

Essex Printing won Awards of Recognition for the printing of Essex Savings Bank's 2013 calendar. A panel of judges with extensive experience in printing and print production examined a wide range of work submitted. Each entry was judged anonymously on its own merit in a category with similar printed pieces.

"We are very proud to have won this competition because it confirms our commitment to our clients that we provide an outstanding level of quality printing," said William McMinn, President of Essex Printing and Events Magazines. For more information please contact Essex Printing at 860-767-9087.

## Summer Exhibits at The Cooley Gallery

**June 14 - July 13.** The Greek House, The story of a young painter's love affair with the Greek island of Sifnos by Christian Brechneff with Tim Lovejoy. Book signing and celebratory exhibition of work by artist Christian Brechneff.

Opening reception June 14th from 5 pm - 8 pm. Admission is free. Visitors are welcome and encouraged Tuesday through Saturday, 10 am to 5 pm or online anytime at [www.cooleygallery.com](http://www.cooleygallery.com). The Cooley Gallery, 25 Lyme Street. (860)434-8807; [cooleygallery.com](http://cooleygallery.com).

**July 20 - August 24.** Art & Money, Paintings by Trompe L'oeil Masters Michael Theise and John Yerger. Opening reception July 20th, 5 pm to 8 pm. Admission is free. Visitors are welcome and encouraged Tuesday through Saturday 10 am to 5 pm or online anytime at [www.cooleygallery.com](http://www.cooleygallery.com). The Cooley Gallery, 25 Lyme Street. (860)434-8807; [cooleygallery.com](http://cooleygallery.com).

**August 29 - September 28.** Lit Up! Pastel paintings by Gigi Liverant & Neon Art by Mundy Hepburn. Opening reception

August 29th, 5 pm to 8 pm. Admission is free. Visitors are welcome and encouraged Tuesday through Saturday 10 am to 5 pm or online anytime at [www.cooleygallery.com](http://www.cooleygallery.com). The Cooley Gallery, 25 Lyme Street. (860)434-8807; [cooleygallery.com](http://cooleygallery.com).

• **Trash & Recycling continued from page 26** •

13, 27, August 10, 24, September 7, 21, and October 12, 26. For a complete list of acceptable and unacceptable materials visit [www.rivercog.org](http://www.rivercog.org) or call 860-581-8554.

**2013 Electronic Recycling** is now accepted at the Old Lyme Transfer Station. Covered and non-covered electronic devices (CEDs) including computers (personal computers, mainframes, mid-range computers, laptops); networking equipment (hubs, switches, control cards, etc.); computer monitors, televisions, printers; keyboards; mice; adaptors; stereos; speakers; VCRs; scanners, fax machines; copiers; telephones and telephone systems; computer wire and cable; computer drives and storage devices (floppy drives, scrap aluminum; (machine and machine parts, cable extrusions, etc); fluorescent light bulbs; UPS (uninterrupted power supply) batteries; and related computer and electronic equipment.

Betty Martelle  
SPECIALIZING IN SHORELINE HOMES

Spring is on its way...  
A Good Time to Buy or Sell

Mobile 860.333.7117 | Fax 860.388.5710  
Betty.Martelle@Raveis.com  
[www.bettymartelle.com](http://www.bettymartelle.com)  
33 Main Street, Old Saybrook, CT 06475

WILLIAM RAVEIS  
REAL ESTATE • MORTGAGE • INSURANCE  
The Largest Family-Owned Real Estate Company in the Northeast



# Old Lyme Phoebe Griffin Noyes Library

Attending a program? Please register! It's simple and easy to register online at [www.oldlyme.lioninc.org](http://www.oldlyme.lioninc.org) under the Events tab or call the Library at 860-434-1684 for staff assistance. New programs are posted monthly

on the website and in the monthly printed calendar. Sign up for the email newsletter on our website for convenient delivery to your Inbox. The Library does not share your emails with other businesses or marketing agencies.

Please welcome our newest staff member, Michelle DeSarbo, the new Children's Librarian at the OLPGN Library. Michelle can be reached at (860) 434-1684, or email her at [mdesarbo@oldlyme.lioninc.org](mailto:mdesarbo@oldlyme.lioninc.org). Stop by to meet her at the library during a story hour, after school program or at one of our many summer reading activities.

## Dig Into Reading! Summer Reading Program 2013

**Children ages two through pre-kindergarten.** Children in this age group are welcome to join the newest addition to our summer program and be "Little Diggers" in our "Dig Into Reading" Early literacy Reading Program. Using a reading record to chart you child's progress, parents will read to their little ones and encourage them to add a sticker to mark their progress. Each record has 50 spots for stickers (materials provided by OLPGN Library) once the record is complete, hand it in to the Library and receive a gift certificate for an ice cream cone at the Old Lyme Ice Cream Shoppe. Limit 3 per child. The OLPGN Library Summer Reading program "Little Diggers" is generously funded in part by the Lyme-Old Lyme Junior Women's Club.

**Children entering grades kindergarten and up.** Children in this age group will register for the Library's "Dig Into Reading" Summer Reading Program and will receive a "Frequent Reader Card" to accumulate "stamps" for every book read. Participants will be asked to fill out a short book review/rating and brief summary for one of the 10 the books they have read (books read with a parent counts). Once they have read 10 books, or received 10 stamps, and turned in their book review they can turn their cards in for prizes: gift cards for local stores i.e. The Old Lyme Ice Cream Shoppe, and The Chocolate Shell. Their submitted Frequent Reader cards will be used as an entry ticket to win a Summer Grand Prize (still to be determined) at the end of the season. The OLPGN Library Summer Reading Program is generously funded in part by the Lyme-Old Lyme Junior Women's Club.

**Registration Day for the Summer Reading Program: Saturday June 22, 10:00 am-2:00 pm at the OLPGN Library.** Can't make it and still want to be a part of it? Email Michelle at [mdesarbo@oldlyme.lioninc.org](mailto:mdesarbo@oldlyme.lioninc.org) with your first and last name, grade entering in the fall, and an email address. You can pick up the program materials at the library.

Rules: Limit 3 Gift Cards per person \*while supplies last. We hope to have you reading with us this summer. Thank you so much for your participation!

**"Evanced" software is coming!** Provided by the Connecticut State Library, Evanced, a special online

management component for reading programs, is designed for those who would prefer to keep track of their summer reading online. Information regarding the online management program will be available via our website [www.oldlyme.lioninc.org](http://www.oldlyme.lioninc.org). Details coming soon.

## Children's Events

**Monday's 10:30 am Drop In Story and Craft Time.** Two to five year olds will delight in listening to stories, singing songs, and making a themed craft. All this free fun takes place in the Community Room. Each program lasts approximately thirty minutes. No need to register – just drop in. No class Memorial Day May 27.

**Thursday's 10:15 am Drop In Baby Time.** Children ages birth through age two. Introduce your baby to the library and meet new people. Activities include: sharing books, singing songs and finger plays, and then playtime and exploration with a simple craft! Each program lasts approximately thirty minutes. No need to register – just drop-in.

**Friday June 7, 3:30-5:00 Make Your Own Marshmallow Launchers.** Grades 3-8 are welcome to attend this one, children and teens in separate areas for construction. Come to the Old Lyme Phoebe Griffin Noyes Library to build your own Mini Marshmallow Launcher. Materials will be provided. Using PVC pipe, elbows, tees and caps you will learn how to assemble a marshmallow launcher. Target and distance competition will take place after assembly is complete. Space is limited. Registration is required for materials planning purposes. Snacks will be served. We hope to see you there. Register online at [www.oldlyme.lioninc.org](http://www.oldlyme.lioninc.org) under the "Teens/Children's Programs" tab or call the Library at 860-434-1684.

**Friday June 14, 6:30-7:30 pm, Jester Jim Variety Show for All Ages.** Brought to you by OLPGN Library, this program will take place at the Lyme-Old Lyme Middle School Auditorium. Celebrate the beginning of the "Dig Into Reading" Summer Reading program with a kick-off event designed to get you in gear for summer reading fun! With nothing more than a trunk full of props, Jester Jim will have you cracking up in your seat. Juggling, balancing, and beatboxing, this show is packed with fun and excitement for the whole family! Registration is required by going online at [www.oldlyme.lioninc.org](http://www.oldlyme.lioninc.org) or call the Library at 860-434-1684. The Registration list will be checked at the door and others admitted on a first come first serve basis.

**Tuesday July 16, 6:00-7:30 pm, "Sweet Beats" Family Style Concert on the Library Lawn Featuring Eleanor Robinson and Friends.** Children of all ages and their families are welcome to join Eleanor Robinson (Lullaby Nights) for a concert on the lawn. Bring your own lawn chairs or blankets and let little ones delight to the music of Eleanor and friends with songs designed to get your little ones dancing! Registration is not required. Eleanor's music CD's will be available for purchase.

This program series is generously sponsored by the Bring Our Music Back Foundation (BOMB). The BOMB foundation is devoted to bringing music based programming to the

*continued on page 29*

• *Library continued from page 28* •

community and is pleased to be able to sponsor this effort at the Old Lyme Phoebe Griffin Noyes Library.

**July 27, Old Lyme's Midsummer Festival, 9 am – 3 pm, Children's Hands-On Minds –On Craft.** Come to the Hartman Education Center at the Florence Griswold Museum to make a summer reading themed craft! Children and families are welcome to drop in and sit down to create a dirt cup using chocolate or vanilla pudding, crumbled cookies and gummy worms for a "Dig into Reading" summer treat. Take home a color your own bookmark to use with your summer reading fun.

**Friday, August 16, 2:30 pm - 4:00 pm, Make Your Own Magic Treasure Rocks.** Celebrate summer reading with a "Dig Into Reading" themed craft. Children in grades K-5 will delight in learning how to make their very own treasure rocks. Using a simple mixture of baking soda and water, kids will sculpt and decorate their own rocks and hide a secret surprise inside. Swap rocks with your fellow crafters, then take them home and dissolve them using our special instructions. The treasure inside is yours to keep. Prepare to get messy; this hands-on activity will involve food coloring.

Parental involvement is encouraged. Registration is required. Register at [www.oldlyme.lioninc.org](http://www.oldlyme.lioninc.org) under the "Children's Programs" tab, or call the Library at 860-434-1684.

#### **Young Adult Programs**

**Teen Scene Summer Reads! Old Lyme Phoebe Griffin Noyes Library Summer Reading Program 2013.** Teens entering six grade and up will be entered into the Library's Teen Scene Summer Reads Summer Reading Program and once registered will receive a "Frequent Reader Card" where they will receive "stamps" for every book read. Participants will be asked to fill out a short book review/rating and brief summary for one of the 10 the books they have read (books read with a parent counts). Once they have read 10 books, or received 10 stamps, and turned in their book review they can turn their cards in for prizes: gift cards for local stores i.e. The Old Lyme Ice Cream Shoppe, and The Chocolate Shell or Coffee's Country Market. Their turned in Frequent Reader cards will be used as a raffle ticket for an end of the Summer Grand Prize (still to be determined). The Old Lyme Phoebe Griffin Noyes Library Summer Reading Program is generously funded in part by the Lyme-Old Lyme Junior Women's Club.

"Evanced" is an online management component to this program designed for those who would prefer to keep track of their summer reading online. Information regarding the online program management program will be available via our website [www.oldlyme.lioninc.org](http://www.oldlyme.lioninc.org) details coming soon.

Registration Day for the Summer Reading Program: Saturday June 22, 10:00 am-2:00 pm at the OLPGN Library. Can't make it and still want to be a part of it? Email me with your first and last name, grade entering in the fall, and an email address. You can pick up the program materials at the library. Rules: Limit 3 Gift Cards per person \*while supplies last. We hope to have you reading with us this summer. Thank you so much for your support.

Susie Redman-Parodi, Young Adult Librarian, [sparodi@oldlyme.lioninc.org](mailto:sparodi@oldlyme.lioninc.org) (860) 434-1684

**Friday June 7, 3:30-5:00 pm, Make Your Own Marshmallow Launchers.** Grades 3-8 are welcome to attend this one, children and teens in separate areas for construction. Come to the Old Lyme Phoebe Griffin Noyes Library to build your own Mini Marshmallow Launcher. Materials will be provided. Using PVC pipe, elbows, tees and caps you will learn how to assemble a marshmallow launcher. Target and distance competition will take place after assembly is complete. Space is limited. Registration is required for materials planning purposes. Snacks will be served. We hope to see you there. Register online at [www.oldlyme.lioninc.org](http://www.oldlyme.lioninc.org) under the "Teens/Children's Programs" tab or call the Library at 860-434-1684.

**Friday June 14, 3:00-5:00 pm, Teen Scene Tie Dye Mania.** Teens grades 6 and up are welcome. Bring your shirts, scarves, pillow cases, socks and whatever else you want to add some color to for this fun project. Please bring your own materials, dye and instruction will be provided, Bring a large plastic bag to put each of your items in to bring home to finish the drying process. Registration is required for material planning purposes. Space is limited, register early. Register at [www.oldlyme.lioninc.org](http://www.oldlyme.lioninc.org) under the "Teens Programs". Please wear clothes that you won't mind getting stained – tie-dyeing can be messy.

**Concerts on the Library Lawn Series to Celebrate Summer Reading.** Free! All Ages are welcome! Bring Your Own Lawn chairs or blankets and settle in for some summer time fun!

**Tuesday, June 18, 6:30 pm: The Dizzy River Band.** These four musicians come from very different backgrounds, but share the same passion for good music. The Dizzy River Band is known for its eclectic style, and devoted fans. The band members are: Erin Smith: vocals/acoustic guitar, Frank Natter: vocals/lead electric guitar, Keith Newman: vocals/bass guitar, and Mathew Seymour: vocals/drums. These four people come together to make unique sound that can't be ignored.

**Tuesday, July 9, 6:30 pm, The Side Doors Band.** Acoustic and electric instrumentation with a creative mix of eclectic, original & classic songs. Todd Schragar electric guitar and vocals, Matt Gyorog acoustic guitar and vocal, Mike Conklin bass and vocals, Leif Nilsson banjo, Gary Parrington percussion and Colleen Seymour guitar and vocals.

**Wednesday, August 7, 6:30 pm, The Meadows Brothers.** Ian and Dustin Meadows, 19 and 17, visualized "The Meadows Brothers" as a manifestation of their lifelong love of folk music, songwriting, old instruments, live performance, and high energy showmanship. After playing at a few high school coffeehouses accompanied by only an acoustic guitar, they made it official, and started playing shows together; classic "sibling harmonies" blending with well-worn acoustic guitars. By now, the brothers have settled comfortably into their role as one of New England's few teenaged Americana acts, having maintained a steady schedule of road dates for the past 6 months.

This program series is generously sponsored by the Bring Our Music Back Foundation (BOMB). The BOMB foundation is devoted to bringing music based programming to the community and is pleased to be able to sponsor this effort at the Old Lyme Phoebe Griffin Noyes Library.

*continued on page 30*



• *Library continued from page 29* •

**Adult Programs**

**Phoebe's Book Chats, 2nd Thursday of the Month at 11:00 am in the Community Room.** June 13th - Wild: from Lost to Found on the Pacific Crest Trail by Cheryl Strayed. Check the Library's website for the book selections for July and August.

**We Have Issues: Victorian Secrets Mondays 7:00-8:30 pm with Marsha Bansavage, Facilitator.** June 3 - Pride and Prejudice by Jane Austen.

The series features four classics of Victorian literature to become reacquainted with and to reconsider their timeless themes. Local resident and popular discussion leader, Marsha Bansavage, will facilitate the discussions. Through discussions of four great novels of the period, we will consider the depiction of women in an age in which women were both worshipped and subjugated. Supported by the CT Humanities.

**Mah Jongg Classes with Joanie Fitton Wednesdays 12:30 pm – 3:00 pm.** Mah Jongg is the latest game craze that is gaining in popularity. It's a fun, challenging and competitive game that was brought to America in the early 1920s from China. Mahjongg is a game of skill, strategy and calculation, involving a certain degree of chance. Learn how to play and focus on the skills that will make you a patient and avid player while keeping the brain active and agile. Beginners and experienced players are all welcome. Joanie Fitton is a well-known Old Lyme instructor of both yoga and Mah Jongg. All classes will take place in the Community Room. The cost is \$10 per person per class. Participants may register and pay in person. Class size is limited to 12.

**Watercolor Classes for Beginners with Local Artist, Joan Bernard.** June 19 to July 24 from 1:00 pm – 3:00 pm. Class size is limited to 10. Class fee is \$140 per person. Contact Joan at 860-388-1983. Experience the joy of painting with watercolors and discover the artist within you! The six week course is an introductory level class on watercolors for beginners or anyone who has done some painting previously. Participants will explore the basics of using the three primary colors. Joan Bernard has studied fine art at Syracuse University, The Silver Guild Art Center and Lyme Academy College of Fine Arts. She has been painting in watercolor for 40 years. Joan is a member of the Friends of the Library and serves on the Art Exhibition Committee. Registration is required and checks should be made to Joan Bernard.

**The Library and Potapaug Audubon Society present Remnants from the Dinosaur Age: Sturgeon in Connecticut Waters.** June 6 7:00 - 8:00 pm. Join us for an informational presentation by Tom Savoy, an employee of the Marine Fisheries Division of the Connecticut Department of Energy and Environmental Protection (DEEP). Tom has been working with sturgeons and anadromous fish since 1988. Historically, Connecticut had two species of sturgeon: Shortnose and Atlantic. While both species can still be found here, it is thought that the Atlantic Sturgeon, native to Connecticut, is extinct. Shortnose Sturgeon was among the fish species listed as endangered by federal officials. Shortnose Sturgeon is the smallest of the sturgeon family and doesn't get much

larger than 3 feet long despite being a long-lived species. In Connecticut, Shortnose Sturgeon is generally confined to the Connecticut River but a few have been found in the Thames and Housatonic Rivers. Atlantic Sturgeon was recently listed as endangered in April of 2012. This species can get much larger (exceed 12 feet) and their range is the entire east coast of the United States. Seating is limited. Registration required by calling the Library at 860-434-1684 or online at [www.oldlyme.lioninc.org](http://www.oldlyme.lioninc.org).

**Community Reads Comes to Old Lyme!**

Wednesday July 10 at the Library. Guest Speaker Lynn Gabbard, MS, The Face of Adoption Today.

Tuesday July 16 at the Shoreline Community Center, Soundview Beach - Guest Speaker Nancy Harrington, Esq., Stories of Immigrant Families

Tuesday July 23rd at Town Hall - Michael Caduto, author, singer & storyteller of Native American Myths on Nature and Stewardship of the Land

Thanks to a \$2,500 grant from the Connecticut Center for the Book at Connecticut Humanities, the OLPGN Library and its community partners will offer a Community Reads program to build community and literacy. Partnering with the town of Old Lyme, Friends of the Library, Old Lyme Historical Society, Federation of Beaches and the Lyme-Old Lyme School District, the library will base its Community Reads program on Barbara Kingsolver's book, "The Bean Trees."

Each program will be facilitated by Marsha Bansavage, discussion leader from the Connecticut Humanities and accompanied by a talk with experts in each of the three prominent themes adoption, immigration, Native American heritage and their respect for the environment. The three programs will focus on the novel's most prominent themes while drawing on the protagonist's growing awareness of how all people are interrelated. The goal of the Community Reads program is to encourage residents of all ages and from all walks of life to read and discuss books and the subjects they explore.

For more information, please visit [cthumanities.org](http://cthumanities.org). Free and open to the public. Registration required for planning purposes.

**July 27: Old Lyme's Midsummer Festival 10:30 am – 11:30 am.** Author Talk and Book Signing with Nationally Known Gardener Colleen Plimpton. Chandler Center at the Lyme Academy College of Fine Arts. Trained at the New York Botanical Garden, she has tended her sloping Connecticut acre for 20 years. Colleen has appeared on numerous TV and radio programs including CBS, ABC, Good Morning America and PBS; she pens a prize-winning newspaper column for Hearst Media Group; coaches gardening; has taught at the New York Botanical Garden; lectures widely; and writes for publications such as GreenPrints, Connecticut Gardener, and Toastmaster. Colleen's multi-honored garden memoir, Mentors in the Garden of Life was a Finalist for the 2011 Connecticut Book of the Year in the Memoir category.

**From Hula Hoops to High Fashion: G. Fox in the 1950s. Thursday August 15, at 5:00 pm.** The Library and the Connecticut Historical Society (CHS) are teaming up to bring you this special presentation on G. Fox in the 1950's. For

*continued on page 31*

## Social Services

It is the mission of the Town of Old Lyme Department of Social Services to enhance the quality of life and self-sufficiency of people in need of EMERGENCY financial services. We provide advocacy, planning, resources and deliver these services in partnership with public and private organizations. Services are provided confidentially, courteously and promptly. No one is discriminated against due to race, color, natural origin, religion, sex, age, disability or marital status.

Donations to the Town's Emergency Fund are always welcome. We have established a small local food bank, so donations of non-perishable food items will also be welcome. The Lyme Old Lyme Chamber has agreed to collect a canned good from each member at each Chamber event to help us support our local families.

It was a long and difficult winter and we are all looking forward to a warm and sunny spring. For the Social Services Office that also means it is time to file for Renters Reimbursement. The filing dates have been expanded: April 1st to October 1st.

State law provides a reimbursement program for Connecticut renters who are elderly or totally disabled, and whose incomes do not exceed certain limits. Persons renting an apartment or room, or living in cooperative housing or a mobile home may be eligible for this program. Renters' rebates can be up to \$900 for married couples and \$700 for single persons. The renters' rebate amount is based on a graduated income scale and the amount of rent and utility payments (excluding telephone) made in the calendar year prior to the year in which the renter applies. Applications may be made in the Social Services office from April 1 through October 1.

### Renters Income and Grant Information – 2012 Benefit Year Filing period April 1 – October 1, 2013

Income Over To		Maximum Credit Married/Single	Minimum Credit Married/Single
\$-0-	\$ 16,700	\$900 \$700	\$400 \$300
16,700	22,500	700 500	300 200
22,500	28,100	500 250	200 100
28,100	33,500	250 150	100 50
33,500	40,900	150 -0-	50 -0-

**Eligibility.** Recipient or spouse must be 65 years of age or older, or be 50 years of age or older and the surviving spouse of a renter who at the time of the renter's death had qualified and was entitled to tax relief provided such spouse was domiciled with such renter at the time of the renters' death, or 18 years of age or older and permanently and totally disabled. Must meet a one year state residency requirement.

**Documentation.** Recipient must provide documentation for all sources of income and assets, checking & savings accounts, pension income, IRA and CD accounts, Social

Security payments. Copies of your last 2 checking account statements are needed, along with your bills for utilities, electric, oil and or propane for the full year of 2012. You will also need your lease agreement showing how much your rent was for each month in 2012.

Please call Ruth Roach (860 434-1605 ext. 228) with any questions about what to bring and to make an appointment to file your application. The Social Services office is open Tuesday and Thursday from 9am to noon and Wednesday from 1 to 4 pm.

• *Library continued from page 29* •

most Connecticut residents, the word "Fox's" holds powerful associations. The name evokes images of a beautifully decorated, tall department store on Main Street in Hartford filled with every imaginable garment, home furnishing or domestic necessity dreamed of. Elizabeth Abbe, director of public outreach at CHS will be your guide down memory lane and will take you back, floor by floor, to the day's when Fox's

was the largest privately-owned department store in the U.S. Elizabeth will also give you some insight into Beatrice Auerbach, who became president of G. Fox Co. at a time when very few women held retail management positions.

This program is part of the CHS adult outreach program. To learn more about CHS and its program, visit [www.chs.org](http://www.chs.org).

# PROFESSIONAL EXTERMINATING COMPANY INC.

Richard Cusano • Proprietor  
Locally Owned & Operated

**Residential & Commercial**

**Customized Programs  
to Fit Your Needs**

- **Termites**
- **Rodent Control**
- **Carpenter Ants**

ALL WORK CONFIDENTIAL

UNMARKED VEHICLES

V.A. & F.H.A. CERTIFICATION FOR  
TERMITE INSPECTION

PRICES QUOTED OVER PHONE

Lic. #B-0557



**860-388-4483**

**www.profext.com**



## High Hopes

Through our year round therapeutic riding and horsemanship programs, High Hopes offers opportunities for skill building and achievement to individuals of all ages who face a multitude of challenges each day. The High Hopes experience combines the healing power of the human animal bond with targeted and attainable goals reached through individualized equine assisted activities. An accredited premier PATH Intl. center, High Hopes serves the profession nationally and internationally through its PATH Intl. approved instructor training program.

High Hopes has a 12-week lesson semester in the spring and fall, a 6-week semester in the summer and winter, and a summer camp program. Lessons take place in groups and individually using our indoor and outdoor arenas and expansive trails. For more information please visit our website [www.highhopestr.org](http://www.highhopestr.org) or call 860-434-1974.

**Volunteer Opportunities.** High Hopes is a recognized leader in providing volunteer opportunities to over 600 individuals in our community who are an integral part of daily life at our center. No matter your interest or skill, we have a place for you at High Hopes!

- Love horses? Volunteer by assisting in the riding program as a leader or side-walker, or help care for our horses.
- Love working with youth? Volunteer with our summer camp. Make a difference in one week.
- Have office experience? Help file, type, answer phones and more. With special events all year round we always need volunteers to help with planning and supporting our annual June major benefit, our fall holiday market and numerous receptions and demonstrations.
- If you have experience as a photographer, videographer or IT skills we need you too!

We are currently accepting volunteer applications to assist with our summer camp and horseback riding programs. Experience is not required, training is provided.

For more information contact Courtney Bernard at [cbernard@highhopestr.org](mailto:cbernard@highhopestr.org) or 860-434-1974 ext. 121.

### Volunteer Orientation and Training Dates:

- Wed. May 29th (5:30 - 7:00 pm) General Orientation
- Sat. June 15th (1:00 - 5:00 pm) Summer Camp and General Orientation
- Tues. June 18th (3:30 - 7:00pm) Summer Camp and General Orientation
- Wed. July 31st (5:30 - 7:00 pm) General Orientation

**High Hopes Presents A Night In New Orleans June 8.** Join High Hopes on June 8th for what promises to be a memorable evening featuring the toe-tapping, dancing in the aisles sound of Grammy award winner Terrance Simien & the Zydeco Experience. Proceeds from the evening, High Hopes' premier annual event, will benefit the programs & participants of our year round equine assisted therapy programs. For more information and to purchase tickets please visit [www.highhopestr.org](http://www.highhopestr.org).

**Michael Page Clinic August 10-11.** Michael Page, Olympic medalist and former coach of the Canadian Olympic Three Day Event Team, will be at High Hopes on Saturday, August 10th and Sunday, August 11th hosting a clinic for all levels of riders looking to further their eventing, dressage, equitation, or hunter/jumper proficiency.

Registrants can participate in one or both days of the clinic. The first day will be flatwork. The second day will be gymnastics and coursework. Each lesson will be 1 ½ hour and there will be up to six people in each session. There will be no more than four sessions per day. Michael will be giving a lecture on Friday night prior to the start of the clinic that all registrants are encouraged to attend.

The cost to ride on one day is \$200. The cost for participating both days is \$275. Overnight stabling is available on-site for \$50. Please contact Lauren Fitzgerald at High Hopes Therapeutic Riding Inc. at (860)434-1974 ext. 114 or [lfitzgerald@highhopestr.org](mailto:lfitzgerald@highhopestr.org) for questions and a registration form.



39 Lords Lane  
off Main St/RT154

Deep River, CT



cutting, color,  
texture &  
hair extensions  
extensive retail  
for all hair types  
by appointment  
(860)391-1193  
[anninohair@att.net](mailto:anninohair@att.net)

[www.facebook.com/RoseannAnninoHairStylist](http://www.facebook.com/RoseannAnninoHairStylist)

*continued on page 33*



• *High Hopes continued from page 32* •



*Michael Page, Olympic medalist and former coach of the Canadian Olympic Three Day Event Team.*



*Lyme Horse Trials.*

**Lord Creek Farm Events To Benefit High Hopes and The Connecticut Valley Pony Club.**

- LYME HORSE TRIALS August 18 – Lord Creek Farm, Lyme, CT CONTACT: info@lymehorsetrials.com or visit <http://lymehorsetrials.com>.
- LYME HUNTER PACE September 22 – Lord Creek Farm, Lyme, CT CONTACT: Sarah Carlson, 860-434-1974, ext. 115 or [scarlson@highhopestr.org](mailto:scarlson@highhopestr.org)

**Community Lessons.** Always had an interest in riding or carriage driving? Already ride or drive but want to improve and even try something new? High Hopes will be offering riding and carriage driving lessons to the general public this summer beginning in June. Located on 120 beautiful wooded acres in Old Lyme, lessons are available at all levels taught by the High Hopes instructor staff. For more information and to sign up please contact Sarah Carlson at [scarlson@highhopestr.org](mailto:scarlson@highhopestr.org) or (860) 434-1974 ext. 115.

**High Hopes Annual Meeting - Sunday, October 20.** High Hopes will hold its 39th annual meeting at its facility on Town Woods Road. For more information call 860-434-1974 or visit our website [www.highhopestr.org](http://www.highhopestr.org).

**High Hopes Hoedown and Holiday Market - Sunday, November 17.** Come to a festive celebration with a kick at the High Hopes Hoedown & Holiday Market to be held on Sun., Nov. 17, 12:00-4:00 pm at High Hopes Therapeutic Riding, Inc., in Old Lyme, CT. Join us for the third year of this event which brings community together to give back as the season of giving thanks approaches. Admission is free with a non-perishable food donation to the Shoreline Soup Kitchens. There will be 50 booths with crafts, gourmet food and other items for sale, live music, childrens' entertainment and a raffle with great prizes. For more information call 860-434-1974 or visit our website [www.highhopestr.org](http://www.highhopestr.org).

**High Hopes Offers Field Trips, Pony Power and Birthday Parties.** Field Trips: High Hopes provides opportunities for mounted and unmounted field trips for a variety of organizations and groups such as public school groups, scout troops and residential group homes.

Pony Power: Pony Power offers off-site educational demonstrations to the public, school groups, day care centers, residential treatment programs, hospitals and nursing homes, long term care facilities, and anyone else in need of Pony Power! Demonstrations take place outdoors, generally last one hour, and include hands on grooming and care.

Birthday Parties: High Hopes birthday parties are two-hour visits which include a mounted riding lesson led by a PATH Intl. Certified Instructor and trained volunteers. Enjoy our beautiful grounds and facility with your party of up to twelve children.

For More Information About High Hopes and these programs visit our website [www.highhopestr.org](http://www.highhopestr.org).

- Like us on Facebook <https://www.facebook.com/#!/pages/High-Hopes-Therapeutic-Riding-Inc/69344422992>

**Town Offices**

**52 Lyme St, Old Lyme, CT 06371**  
Ph: 860-434-1605 • Fx: 860-434-1400

**Town Hall Hours**  
Monday - Friday: 9:00 AM - 4:00 PM

# Dog Licenses

Dog Licenses should be paid by June 30, 2013

Fee: Male or Female - \$19

Neutered Male or Spayed Female - \$8

Penalty: Late Penalty \$1 per month

- All dogs six months or older must be licensed and wear a collar and tag at all times.
- A dog without a tag is presumed to be unlicensed and is not protected by law.
- A tag must not be used on any dog other than the dog described in the license bearing corresponding number.
- You are liable for damage done by your dog, including damage to shrubs, flowers or trees.

- All dogs must be vaccinated against Rabies and owners must submit a certificate to the Town Clerk when licensing their dog. (Per C.G.S. Sec. 22-338).
- Owners of roaming dogs are liable to prosecution.
- When a spayed or neutered dog is licensed for the first time, a certificate from a licensed veterinarian must be presented.
- If application is made by mail, make check payable to: Town of Old Lyme and please enclose a SELF-ADDRESSED STAMPED ENVELOPE.

MAIL TO: TOWN CLERK, 52 Lyme Street, Old Lyme, CT 06371. If your dog is deceased or has moved away, please notify the Town Clerk's Office 860-434-1605 ext. 221.

## Accolades for Events Magazines!

*I've always enjoyed reading your Events Magazine. I've lived and worked on the shoreline most of my life and love to see what's going on and look at the ads for local businesses. I think it's important to shop local and support our fellow businessmen and women.*

*As a graphic designer, the look of the magazine is clean, stylish and classy. Keep up the good work.*

**– Bette McLean, L.E. Designers, Inc., Old Saybrook, CT**

### Old Lyme Town Hall • 860-434-1605 www.oldlyme-ct.gov

#### Old Lyme Municipal Departments

Department	Contact	Phone
Animal Control		434-3047
Assessor	Walter Kent	434-1605 x218
Board of Selectmen	Bonnie A. Reemsnyder	434-1605 x211
Board of Selectmen	Mary Jo Nosal	434-1605 x212
Board of Selectmen	Skip Sibley	434-1605 x212
First Selectwoman	Bonnie A. Reemsnyder	434-1605 x211
Building	John Flower	434-1605 x230
Emergency Management	David Roberge	434-1605 x231
Finance	Doris Johnson	434-1605 x215
Finance Director	Nicole Stajduhar	434-1605 x232
Fire Marshal	David Roberge	434-1605 x231
Harbormaster	Michael Moran	434-1605 x212
Health	Vijay Sikand, M.D.	434-1605 x214
Information Technology	Ruth Roach	434-1605 x237
Town Historian	John Pfeiffer	434-8829
Land Use	Kim Groves, Kim Barrows	434-1605 x236
Parks and Recreation	Don Bugbee	434-1605 x235
Police	TFC Gary Inglis	434-7080
Probate Court	Hon. Jeffrey McNamara	739-6052
Public Works	Ed Adanti	434-2461
Registrar of Voters	Sylvia Peterson & Don Tapper	434-1605 x226
School District #18	Superintendent of Schools	434-7238
Senior Center		434-4127
Social Services	Ruth Roach	434-1605
Tax Collection	Judith Tooker	434-1605 x216
Town Clerk	Eileen Coffee	434-1605 x221
Treasurer	John Bysko	434-3632
Zoning Enforcement	Ann Brown	434-1605 x225
<b>Other Agencies</b>		
Library/Passports	Mary Fiorelli, Director	434-1684
Youth Services Bureau	Mary Seidner, Director	434-7208

### Old Lyme - Community Listings

#### USEFUL NUMBERS

CAMP CLAIRE . . . . .	(860) 434-0368
CONSUMER PROTECTION . . . . .	(860) 566-2294
LYMES' YOUTH SERVICE BUREAU . . . . .	(860) 434-7208
SENIOR CENTER. . . . .	(860) 434-4127
OLD LYME VISITING NURSE. . . . .	(860) 434-7808
OLD LYME HISTORICAL SOCIETY . . . . .	(860) 434-0684
9 TOWN TRANSIT . . . . .	(860) 510-0429
LYME/OLD LYME JR WOMEN'S CLUB . . . . .	(860) 501-9773
DEMOCRATIC TOWN COMMITTEE . . . . .	(860) 434-2271
REPUBLICAN TOWN COMMITTEE . . . . .	(860) 434-0740
LYME ART ASSOCIATION . . . . .	(860) 434-7802
VETERANS OF FOREIGN WARS -	
LYMES' POST 1467. . . . .	(860) 434-4207
AMERICAN LEGION - POST 41 . . . . .	(860) 664-0047

#### SCHOOLS

SUPERINTENDENT'S OFFICE DISTRICT 18 . . . . .	(860) 434-7238
MILE CREEK SCHOOL . . . . .	(860) 434-2209
CENTER SCHOOL . . . . .	(860) 434-7838
MIDDLE SCHOOL . . . . .	(860) 434-2568
LYME/OLD LYME HIGH SCHOOL . . . . .	(860) 434-1651
MULTICULTURAL MAGNET	
(NEW LONDON) . . . . .	(860) 437-7775

#### COLLEGES

LYME ACADEMY COLLEGE OF FINE ARTS . . . . .	(860) 434-5232
---	----------------

## Estuary Council

**ESTUARY COUNCIL OF SENIORS, INC.** has been serving seniors in the nine-town Estuary region for 38 years. Call us to receive our *Gazette Newsletter* or go to [www.ecsenior.org](http://www.ecsenior.org) for our online newsletter, events calendar, menu, and more.

**WINE ON THE WATER. JUNE 6th, 5:30-7:30 pm.** Join us for a wonderful wine tasting, sponsored by Seaside Wine & Spirits. Tickets are \$25, and go on sale May 15th at the Estuary, 220 Main Street, Old Saybrook. Proceeds benefit EMOTS, the Estuary Medical Outpatient Transportation Service. Call 860-388-1611 for more information.

**MEALS ON WHEELS** – hot meals delivered to your home. Call Diane at 860-388-1611. A \$3.00 donation request for those aged 60+. Meals are supported by Senior Resources Agency on Aging with Title III funds available under the Older Americans Act.

**CAFÉ MEAL SITES** - Clinton, Old Lyme, Old Saybrook, Westbrook (Thursdays). Reservations required by calling 860-388-1611 by 11 am, 24 hours in advance.

**STAN GREIMANN ESTUARY MEDICAL OUTPATIENT TRANSPORTATION.** For medical appointments to any medical location beyond the nine-town estuary region. Call Judy at 860-388-1611. Suggested donation of \$35 for a roundtrip doctor appointment up to 5 hours. Suggested donation of \$70 for appointments over 5 hours.

**CLASSES AND ACTIVITIES:** Board Games, Billiards, Ping Pong, Yoga, Exercise Classes, Mah Jongg, Wii, Cribbage, Writer's Group, Book Club, Quilter's Group, Needlecrafters, Hand and

Foot, and more! Check the Gazette for all of our programs.

Now forming the **Estuary Drama Club** – First meeting is at 1 pm on June 5th. We want you and your ideas! Call 860-388-1611 to sign up.

**ESTUARY THRIFT SHOP:** Open 10 am - 3:45 pm, Monday - Friday; and from 9 am - 12:45 pm on Saturdays. Clothes (men, women, and children), kitchen items, crafts, and more available. Donations are accepted and volunteers always needed.

**THE MARSHVIEW GALLERY AT THE ESTUARY:** Open daily 8 am - 4 pm, and from 9 am - 1 pm Saturdays. The art on exhibit changes monthly and highlights the talents of local artists from along the shoreline. The artists donate a portion of their art sales to the Estuary Council of Seniors. An artist's reception is held the second Friday of each month from 5 - 7 p.m. Refreshments are served, and a door prize is drawn each month. All ages are welcome. Call 860-388-1611 for information.

**DONATE YOUR CAR OR BOAT TO THE ESTUARY COUNCIL** - Turn your car or boat into a tax deduction by calling: 1-800-716-5868. Proceeds benefit the vital services we provide for seniors in the nine-town Estuary Region.

**VOLUNTEER OPPORTUNITIES:** Call Judy at 860-388-1611.

## Family Conversations

Through many years of experience working with seniors and their families, we at Chester Village West have discovered that there is a need to assist adult children with the approach and eventual conversations they will have with their parents and loved ones.

These adult children are usually between the ages of 45 and 60. They are managing work, educating their children, and worrying about their aging parents at the same time. They have many options, but little time to do the research on their own. They need answers in a factual and timely manner.

Through our new "Conversation Starters Program," we offer free consultation services for your family, employees, clients and/or peers. We will provide a balanced approach, whether the family decides to re-locate their parents to a senior living community, or access in-home care. We will help them assess their current situation and streamline the process to give them enough knowledge to make their own decisions. We understand that "knowledge is power."

How to Access Our Complimentary Consulting Services

1. Contact Marian Bairstow at 860-526-6800, [bairstow@lcsnet.com](mailto:bairstow@lcsnet.com)
2. Visit our Conversation Starters Landing page, [www.AConversationStarter.com/CT](http://www.AConversationStarter.com/CT)

## SPOTLIGHT!

### Our Newest Old Lyme Events Customers

*Any Time Fitness*

*Brewer's Boating Club*

*Fulton Theroux Funeral Home*

*King Family Eye Care*

*Niantic Lions Club*

*Roseann Annino Hair Stylist*

*Shoreline Periodontics*

*Smith's Acres*

*William Pitt/Sotheby's – Colette Harron*

*New William Pitt/Sotheby's – Old Lyme*



## Lyme Academy College of Fine Arts

The Class of 2013 may have graduated but Lyme Academy College is far from quiet over the summer. We offer a wonderful range of Pre-College and Continuing Education programs throughout the summer months, so why not join us and discover the artist within you?

Open to all, the program has been completely revamped and many of the College's acclaimed faculty and alumni brought on board to teach classes. The Pre-College program is designed for high school students who wish to explore and expand their artistic abilities, whereas CE courses are for all ages and abilities. Several classes even offer college credit.

One program highlight is Concept Art, taught by Illustration faculty member David Wenzel, who is gaining fame and popularity as the artist behind J.R.R. Tolkien's recently republished, *The Hobbit: A Graphic Novel*. Wenzel notes the course objective is, "To help bridge the gap between Fine Art and Illustration." This course runs July 8-12, 9am to 3pm, and is open to both Pre-College and CE students.

Join Painting professor Nancy Gladwell in a from-the-ground-up approach to oil painting in Painting I, also July 8-12, from 9 am to 3 pm. All ability levels are welcome to join this course. Similarly, all levels are also welcome to take Intermediate Painting Composition (July 22-26, 9 am to 3 pm), a creative painting course taught by alumna Tara Smith.

For the digitally minded Pre-College student, Photoshop/Digital Collage will provide an intensive introduction to the world of digital painting through the use of Photoshop CS 6. This course is taught by Painting faculty member and Yale alumnus Roland Becerra and runs July 8-12, 9 am to 3 pm.

Drawing I is a Pre-College class (July 15-19, 9 am to 3 pm) taught by alumnus Brian Keith Stephens, which includes observational techniques for building accurate representations of still life. Another class for Pre-College students, Introduction to Figure Sculpture, offers the opportunity to sculpt an 18" figure based on observation of a model. Taught by Alumna Liza Masalimova, it runs July 29 - Aug. 2, 9am-3pm.

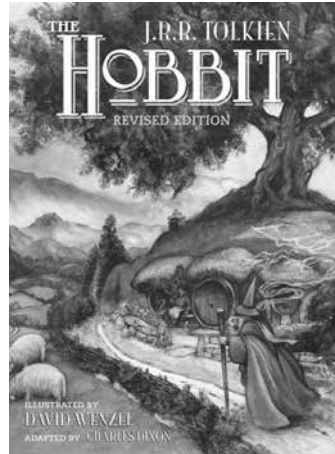
One of the College's most popular Pre-College courses is Building Your Portfolio with Figurative Work (July 22-26, 9 am-3 pm), taught by alumnus Rick Lacey. This class examines the world of figure drawing and is an excellent portfolio building opportunity. The equivalent class for CE students is Introduction to Figure Drawing, which is taught by alumnus Adam Nowakowski every Wednesday in July from 6 to 9 pm.

Finally, for anyone wanting to draw the figure in a relaxed setting, a monitored Open Studio will be held every Saturday in July from 10 am to 1 pm.

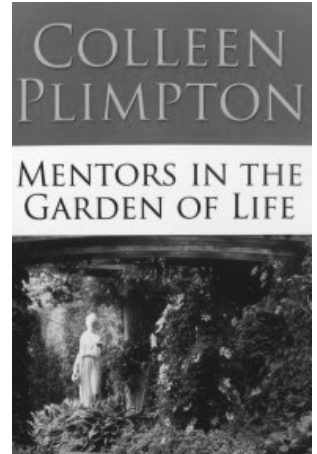
All classes are competitively priced between \$275 and \$420. Open Studio is \$15 per session or \$40 for all four.

For further information, contact Adam Nowakowski at 860.434.3571, ext. 127, or visit [www.lymeacademy.edu](http://www.lymeacademy.edu) and click on the CE & Pre-College tab.

We recently heard the great news that five of our students have been selected to participate in the National Sculpture Society's (NSS) annual contest for young sculptors, which is



*Illustration faculty member David Wenzel is teaching a class this summer based on his award-winning graphic novel version of The Hobbit. The class is open to both Pre-College and Continuing Education students.*



*New York Botanical Garden educator Colleen Plimpton shares her award winning book Mentors in the Garden of Life at this year's Midsummer Festival.*

being held this year in New York City. This is a tremendous achievement to have five students from the same school selected out of the total of 15 and even the NSS commented on how rare it is to have so many students from the same school. Congratulations to Lucian Goff, Morteza Khakshoor, Yelizavetza Masalimova, Damian Masanz and Kellie Pereira!

The College will be participating again in Old Lyme's Midsummer Festival on July 27 and 28. We will host an opening reception on Friday, July 27, from 5 to 7 pm. for our summer exhibition of "Selected Student Work" in the Chauncey Stillman Gallery.

On Saturday, July 28, there will be an exciting selection of musical entertainment from 11 am to 3:45 pm. sponsored by Bring Our Music Back and Lymes' Youth Service Bureau, which includes The Zydeco Dogs, The Sugarfoot Youth Jazz Band and Old Lyme's own Dan Stevens. At 10:30 am, nationally acclaimed author and New York Botanical Garden educator Colleen Plimpton will give a talk and host a book-signing for her book *Mentors in the Garden of Life*, a finalist for a 2011 Connecticut Book of the Year award. The Old Lyme Phoebe Griffin Noyes Library is sponsoring this author event.

A variety of art-themed vendors will be on the College grounds selling and, in some cases, demonstrating their wares. These include linens and more by Patricia Spratt for the Home, books and tasty treats by Josh Chalmers and Steve Evankow's hand-crafted stonework. Meanwhile, the College Café al fresco will be serving a delicious menu including lobster rolls, Po' Boys, oysters and ginger lemonade.

If you're thinking about pursuing a fine arts education, come visit our beautiful campus where you will receive

*continued on page 37*

## The Old Lyme-Lyme Volunteer Connection

Summer is around the corner and if you are a student or a lucky adult who has summers off you may be looking for interesting ways to spend your time. The Old Lyme – Lyme Volunteer Connection continues to add additional service organizations and the website [volunteer.truist.com/ollvolunteer/volunteer/](http://volunteer.truist.com/ollvolunteer/volunteer/) now lists eighteen organizations with volunteer opportunities that are appropriate for a range of ages. Teens that are at least fourteen can volunteer at High Hopes with their summer programs; the hours are flexible and there are a variety of jobs to do. Other opportunities for teens include helping in The Nearly New consignment shop and helping people in need receive groceries at the Shoreline Soup Kitchens and Pantries on Saturday mornings. If you are the parent of a younger student and would like to get involved, a number of organizations have opportunities for the parent and

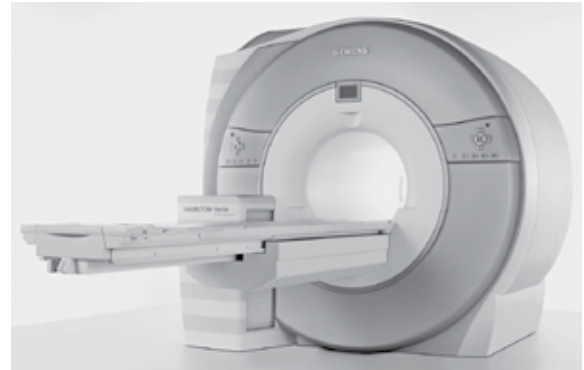
child to work together. Some of these organizations include the Common Good Gardens (formerly the Soup Kitchen Garden), the Old Lyme Land Trust, and the Shoreline Soup Kitchens and Pantries. For young adults with an interest in the arts there are a number of opportunities available at the Lyme Academy College of Fine Arts, the Florence Griswold Museum, and the Lyme Art Association. This is just a sampling of the opportunities that are available. Please visit the website to see the range of opportunities and organizations that need volunteers.

The Old Lyme – Lyme Volunteer Connection would like to continue to add additional organizations to the website. If you are the leader of an organization that is either located in or provides services to Old Lyme or Lyme and would like to participate contact Noah Christiano, the high school student who manages and administers this website, at [ollvolunteer@gmail.com](mailto:ollvolunteer@gmail.com).

## Middlesex Hospital Now Offers 3T MRI

The Radiology Department at Middlesex Hospital has a strong tradition of keeping current with the latest, most advanced technology. The 3-Tesla (3T) MRI is just the latest example of how the Hospital is staying ahead of the curve in the level of technology it provides to patients. This diagnostic marvel provides the most up-to-date technology currently available for MRI imaging. The strength of the MRI magnet itself (measured in “teslas” and 3 teslas being the most powerful magnet currently available on the market) allows the machine to provide sharp, detailed pictures of the entire body. It is especially useful for getting unparalleled image clarity, leading to definitive diagnoses, of the breasts, prostate, head and small joints such as the knees, ankles, shoulder, elbows, wrists, hands and feet.

This super-powerful, wide-open bore, high-field MRI also offers a new dimension in patient comfort. It combines a much larger bore (circular opening) size and a much shorter “tunnel” (length). The new MRI looks just like a CT scanner, only a foot longer. The new wide-open bore design accommodates patients of all sizes, eliminating anxiety and claustrophobia. For many exams, both the feet and head remain outside the machine. The newer technology combines an open feel with the ability to capture high-field quality diagnostic images. In



The 3-Tesla (3T) MRI.

addition, the new MRI is quieter and may require less time to capture the necessary images.

When using the new, 3T MRI at Middlesex Hospital, patients can be sure that their doctors will get the highest quality medical imaging possible. They will also be comfortable, experience less noise and likely spend less time in the machine. In other words, patients can now make a smarter choice at Middlesex Hospital if they need to have an MRI!

• *Lyme Academy continued from page 36* •

all the information you need about the BFA degree, and Post-Baccalaureate and Three-Year certificates – or call our Admission Department at 860.434.5232.

But if you would like to be a part of the College without taking classes, volunteer opportunities are available in many departments. Please call Ann de Selding at 860.434.3571 ext. 117 or email her at [adeselding@lymeacademy.edu](mailto:adeselding@lymeacademy.edu).

The College’s Chauncey Stillman and Sill House Galleries hours are open to the public Monday through Saturday from 10 am - 4 pm. Admission is free and our well-equipped Art Store is also open to the public.

### Town Ordinance

Dated October 4, 1920

“That it is hereby declared a misdemeanor punishable by a fine or jail sentence for any person over twelve years of age to appear in a one piece bathing suit without overskirt reaching to the knees at any beach or any public place in the Town of Old Lyme and that copies of the law be posted in sundry places.”

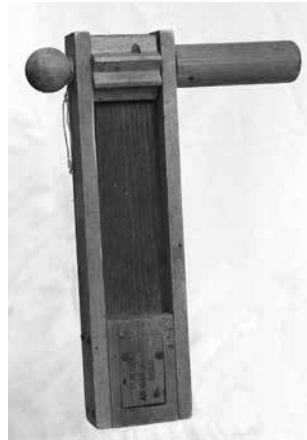
## Old Lyme Historical Society

### A Challenge from the Archives

The Old Lyme Historical Society, established in 2005, has as its mission “to collect, preserve, and interpret the rich history of Old Lyme.” Many of you may know of the Historical Society through its impressive list of publications, books, maps, and the very successful Now and Then community calendar with the 2014 edition now in production. The Society also has presented John Pfeiffer, Old Lyme Town Historian as the speaker, in a series of annual dinners that take place each spring.

What you may not be as familiar with is the work of the Archives Committee. Meeting weekly for the past two and a half years, this group of volunteer archivists has been culling through hundreds of items: letters, books, maps, photographs, utensils, pieces of granite from the McCurdy quarry, and other ephemera. All of this material has been donated to the Society by local residents wanting to ensure that their pieces of Old Lyme history will be preserved for future generations. Now that the Society has PastPerfect, a software program for recording all of the Society’s holdings, three Board members are very busy transcribing handwritten sheets onto the program. The eventual goal is to have this information online so that researchers both amateur and professional will have access. The Society also hopes to develop an e-museum and have online exhibits. It is an ambitious undertaking, but most worthwhile.

The Archives Committee thought it would be fun to test the reader’s knowledge of Old Lyme history. It was difficult to choose from among so many interesting items in the archive, but the two selected both marked a very important era in local history.



*Old Lyme Historical Society Archives Challenge Object #1.*



*Old Lyme Historical Society Archives Challenge Object #2.*

Two interesting objects in the Old Lyme Historical Society’s archives are shown in these photographs. Can you guess what they are? Try your best at identifying the objects’ use and approximate dates. The winner with the closest guess will receive a reproduction of a historical map of Old Lyme. Send in your entry by June 30, 2013; email [info@oldlymehistorical.org](mailto:info@oldlymehistorical.org) or write to The Old Lyme Historical Society, PO Box 352, Old Lyme, CT 06371.

## Chamber Update

Our March Dinner Meeting at The Hideaway was well attended. Vincent G. Capece, Jr. & Harry Evert from Middlesex Hospital were our guests & they filled us in on the Hospital’s new Westbrook facility, scheduled to open in 2014. Our Annual Dinner Meeting on June 20 will also be at The Hideaway. We expect to present scholarships, see a presentation from Mike Kane of the Old Lyme Educational Foundation, and pay tribute to a recently retired member: Neil Gottfried of Marc Jewelers. Reserve a place by June 14, please! [www.visitoldlyme.com](http://www.visitoldlyme.com)

Many joined us in the Courtyard at the Old Lyme Marketplace in April for a spring reception hosted by the Woman’s Exchange, Faces Aesthetics-Skincare, and Coastal Cuts. As one member said: “It was interesting seeing and appreciating the specific offerings of [the sponsors]...The food was a welcome surprise.”

Thanks to all who supported and attended our 13th Annual Taste of the Lymes at the Old Lyme Country Club on May 5th – Cinco de Mayo.

The list of participants is a good reflection of the diversity of our membership: Bring Our Music Back, Divine Wine Emporium, Lyme Academy College, Florence Griswold Museum, Andy’s Deli & Market, The Cooley Gallery, The

Woman’s Exchange, Old Saybrook Chamber of Commerce, Bonne Sante, Eastern Connecticut Ballet, Red Satin Band, Critical Skills Education & Training, Help with a Heart, FreshAyer Gallery, LYSB, Healthy Addictions, Anytime Fitness, Old Lyme Inn, The Bowerbird, Jessie’s Restaurant, Cush’s Homegrown, HS Plaut Environmental, The Bee & Thistle Inn, Mentoring Corps for Community Development, Innovative Environmental, Old Lyme Country Club, Lyme Art Association, The Chocolate Shell, Anytime Fitness, Wertheimer & Associates, and Shoreline Web News (publisher of LymeLine.com).

Our Lyme-Old Lyme Chamber has been working hard to ensure that our Chamber remains a vibrant organization, supportive of our community and responsive to the needs of our members.

If you are interested in becoming more involved in Chamber activities, please let us know. And, if you are not a member yet, please consider joining us – membership is only \$50. Applications are available online at [www.visitoldlyme.com](http://www.visitoldlyme.com). Don’t forget: BUY LOCAL!

— Catherine Frank, Lyme Old Lyme Chamber of Commerce President



## Old Lyme Visiting Nurse Association

A Bike Rodeo for youngsters from Kindergarten to 8th Grade will be held on Saturday, June 1 from 10 am to 2 pm on the Lyme-Old Lyme Middle School grounds, 53 Lyme Street, Old Lyme. This event is being sponsored by the Old Lyme Town Police and the Old Lyme Visiting Nurse Association, Inc. Activities will include safety inspection of bikes and helmets and a fun series of skill stations involving lessons in safety and the rules of the road for biking. Participants will be awarded certificates and prizes upon completion of the safety course. Registrations will take place up to 1 pm. Children need to bring their bike and helmet. Parents will be asked to sign a permission slip prior to their children entering the safety course. Free bottled water, coffee and snacks will be available. No rain date. Additional co-sponsors for this event are the New London Elks, Lymes' Youth Service Bureau and the Old Lyme Police Union. For questions about the event please call the Old Lyme VNA at 860-434-5241 or the Old Lyme Police Department at 860-434-1986.



*Children participating in the Bike Rodeo safety event in 2012.*

The Old Lyme Visiting Nurse Association, Inc. thanks the Nurse's Office at the Lyme-Old Lyme High School for coordinating with our organization for our annual clinic there. Blood pressure screenings were done and the health topic showcased was safety issues associated with energy drinks. A total of seventy-two young people and school staff took advantage of these services during their lunch period.

Old Lyme's seasonal as well as year-round residents are welcome to come by Town Nurse Linda Camarra's office in the Lymes' Senior Center, 26 Town Woods Road. Linda is there from 11 am to 1 pm on Monday and Wednesday and from

noon to 1 pm every Tuesday, Thursday and Friday for free consultations, physician ordered clinical services and/or blood pressure checks.

The Old Lyme Visiting Nurse Association thanks Essex Bank and our townspeople who voted for us to receive a generous grant from the Bank's Community Investment Program. The funds received will go towards the purchase of influenza vaccine to be distributed at our annual immunization clinic next fall.

— Muriel Drugan, Executive Director,  
Old Lyme VNA Administration

## Annual White Elephant Sale

**Friday July 12th 9-2 pm and Saturday July 13th 8-12**

It's that time of year again for the White Elephant Sale [WES] sponsored by the Ladies Benevolent Society of the First Congregational Church which raises money for missions and good works both locally and through out the world. These include food pantries, health organizations, family support centers, children's programs, world relief, housing and many more.

Donations are needed to sell at the two day event. Bring donations to the church starting Thursday June 27th through July 6th [closed Sunday and July 4th]. Quality items will be accepted from 9-2 each day. Please visit the church website [www.fccol.org](http://www.fccol.org) and select the White Elephant Sale tab, for a list of donations we can and can not accept.

This is our 77th successive year and is one of the main events on both the town and church calendars. We've all seen garage and rummage sales but few can match the size and color of this one. It has grown so large, it has become a true "community event" as many of our donations and a number of our workers are non-church members. When the bell tower clock strikes 9:00 am Friday the 27th, the ropes come down and the shoppers run for their favorite departments looking for those bargains. If that isn't enough – there is lunch & soda to refresh the shoppers so they can repeat the same process



again on Saturday morning when the prices are half off! Check out the pictures on the church website and a you tube video link of a previous sale.

It is one of the most amazing experiences: seeing and being part of the annual White Elephant Sale. Few events can compare in excitement and camaraderie amongst the workers and even the shoppers who line up in the same spot each year.

## Welcome Summer with the Lyme/Old Lyme Garden Tour

Old Lyme and Lyme will be buzzing with activity June 14 & 15, when the Lyme/Old Lyme Garden Tour makes a return! What better way to celebrate summer's arrival than to spend a day strolling through six beautiful private gardens, including an estate on Hamburg Cove, an architectural gem overlooking the Connecticut River, and a garden that boasts its own putting green?

Tucked away amid the stone walls and rolling hills of the Lyme/Old Lyme countryside, these gardens abound with natural beauty, both flora and fauna. Homeowners nurture vegetables, herbs, perennials, and annuals alongside native trees, shrubs, and marsh grasses; and while deer, osprey, and even the occasional bald eagle are known to frequent this part of the Connecticut River Valley, several of the gardens also feature chickens, horses, and even a koi pond.

This year's Lyme/Old Lyme Garden Tour takes place (rain or shine) on Friday June 14 and Saturday June 15, 2013. The self-guided tour runs from 10am to 4pm both days, and visitors should allow at least three hours to complete the tour. Boxed lunches (\$15), catered by Old Lyme's own Coffee's Country Market, will be available once again with advance reservation (by June 7); and the popular Garden Boutique will tempt visitors with an array of unique and distinctive items for home and garden. Educational talks, included in the admission price, will feature gardening experts speaking on various horticultural topics. Advance tickets for the 2013 Lyme/Old Lyme Garden Tour (\$20 advance; \$25 day of tour) will be

available soon through the agency's website ([www.childandfamilyagency.org](http://www.childandfamilyagency.org)) and at The Bowerbird; they can also be obtained by sending a check and SASE to P.O. Box 324, Old Lyme, CT 06371. (If ordering lunch, please specify the day you will attend.) Group rates available with advance purchase. For more information, call (860) 443-2896, ext. 901. Tickets will also be available for purchase (at \$25) on the day of the tour. Watch for signs directing you to the gardens, and purchase tickets at the table.

All proceeds from the 2013 Lyme/Old Lyme Garden Tour will benefit the many services and capital projects of the Child and Family Agency of Southeastern Connecticut, a private, nonprofit organization dedicated to the well-being and development of all children and their families, with emphasis on the unmet needs of children lacking physical, emotional, and intellectual care and nurturing. With offices in New London, Essex, and Groton, Child & Family Agency is the largest nonprofit children's service provider in southeastern Connecticut. For more information, see [www.childandfamilyagency.org](http://www.childandfamilyagency.org).



## Helping Seniors Transition to a New Chapter

As senior citizens age, their health and lifestyle needs change, sometimes necessitating a change in their retirement living plans. They may grow tired of caring for a large home, or they may face unexpected health concerns that require more daily assistance, or they simply may want a more care-free living environment. Whatever the catalyst, real life changes may need to take place.

While some senior citizens may welcome the move into a smaller home or into an independent or assisted living community, others may be less enthusiastic. They may be hesitant to leave the home where they raised their families, enjoyed their neighbors, or tended to their gardens. They may worry about losing their independence, or about not fitting into their new community.

It is helpful to everyone involved in this transition when there is as much support as possible during this time. This can come from a network of family, friends and caregivers, or from the "welcome teams" found at most retirement and assisted living communities who help residents manage change.

The welcome team at The Saybrook at Haddam retirement and assisted living community in Haddam includes a recently hired, full-time social worker. She offers support and care for residents and their families during the move-in transition, and is able to respond immediately and personally to any other

concerns. She also works to educate families and staff so they can provide the best care (and lifestyle) in their new home.

During this transitional time, experts suggest helping loved ones by focusing on the positive sides of the move. If they are going to a smaller apartment or home, remind them of how much easier caring for their home will be. If they are moving to a senior community, they no longer need to worry about shoveling snow, cutting the lawn, painting the house, or cleaning the gutters. Depending on the community, they may not even have to shop for food or cook meals each day – and they will be able to enjoy a sense of security and peace knowing someone is always nearby if there ever is an emergency.

Celebrate the things that do go well during this time and reinforce that the right living decision was made. Have a card or small "care package" arrive the day your loved one makes the move. If you can, join them for a welcome visit to share lunch or dinner right away (remember to set up a date for the next visit before you leave). Also, if they do move into an assisted living residence, try to attend one or two social events held at the community together.

You are helping them start an adventure, another chapter with new friends, group activities, daily walks and exercise, lectures and classes, and more (perhaps even a new garden).

— Kathy Ryan, Executive Director,  
The Saybrook at Haddam



Old Lyme Post Office on Halls Road - Renovated in 2008, this site features native perennials and small shrubs. There are two large planters that feature seasonal annuals. Large Juniper shrubs and a flower Cherry tree to the right of the building date from an original planting by the Duck River Garden Club in 1976 soon after the post office was built.

Old Lyme Town Hall - Previous Duck River Garden Club plantings of mature Dogwood trees and Azaleas were preserved during the building expansion in recent years. The current planting beneath the Historic sign brightens a shady area in the front lawn of Town Hall. A mixture of perennials and annuals is planted here.

## Smith's Acres LLC

A Yard-Altering Experience!



Open for the season  
9 am to 6 pm  
7 days a week



4 West Main Street  
Niantic, CT 06357  
860-691-0528

**25% OFF**

any one regular priced item

Cannot be combined with any other offer. Not to be used on consignment items

Check out our Workshops and Classes  
<http://www.smithsacres.com/Events.php>  
Find us on Facebook!

Winners of the 2012 Connecticut Agricultural Journalism Awards include: Old Lyme resident Suzanne Thompson, honored for Best Column/Daily Newspapers, *The Day of New London for Farmer is Tops in His Field*, March 31, 2012.

The Awards are given annually by the nonprofit Connecticut Agricultural Information Council (CAIC), a coalition of state farming groups, as part of the festivities surrounding Connecticut Agriculture Day at the state capitol. Each recipient receives an honorarium of \$100 and a plaque. The Awards recognize excellence in reporting on agricultural issues published during the calendar year 2012.

## Lyme Art Association

Lyme Art Association Classes and Workshops in painting, sculpture, and drawing run throughout the year. Please visit our website at [www.lymeartassociation.com](http://www.lymeartassociation.com) to see what is currently offered.

**June 14 - July 2. Old Lyme Landscapes.** A delightful summertime extravaganza of landscape paintings by present day member artists in the tradition of the Lyme Impressionists. Opening reception on Friday, June 21 from 6-8 pm. Gallery hours are Monday-Saturday 10 am-5 pm, Sunday 1pm-5 pm. Admission is free but a \$5 donation is suggested. Lyme Art Association, 90 Lyme Street. (860)434-7802; [lymeartassociation.org](http://lymeartassociation.org).

**June 21 through 2013. Maritime Paintings of Yves Parent.** A special collection of maritime paintings by the late Yves Parent (1941 – 2011). Opening reception on Friday, June 21 from 6-8 pm. Gallery hours are Monday-Saturday 10 am-5 pm, Sunday 1pm-5 pm. Admission is free but a \$5 donation is suggested. Lyme Art Association, 90 Lyme Street. (860)434-7802; [lymeartassociation.org](http://lymeartassociation.org).

**August 2 - September 21. Summer Painting & Sculpture Exhibition and The Sporting Life.** Juried exhibition of LAA member artists showing representational paintings, drawings or sculpture in any theme. Opening reception on Friday, August 9 from 6-8 pm. Gallery hours are Monday-Saturday 10 am-5 pm, Sunday 1pm-5 pm. Admission is free but a \$5 donation is suggested. Lyme Art Association, 90 Lyme Street. (860)434-7802; [lymeartassociation.org](http://lymeartassociation.org).

## SHORELINE PERIODONTICS PC



- Dental Implants
- Laser Gum Surgery
- Esthetic Gum Surgery

**Gregory A. Toback, D.M.D., M.S.**  
Board Certified Periodontist

*"Our practice is committed to providing patients with state-of-the-art treatment for all forms of periodontal disease in a comfortable caring environment."*

**Free Implant Consultations**

NEW LONDON, CONNECTICUT  
190 Hempstead St  
New London, CT 06320  
860-443-2428



[www.shorelineperio.com](http://www.shorelineperio.com)





**BBB**  
**PEST CONTROL** LLC  
 860•510•9159

- General Pests
- Termites
- Rodents
- Inspections
- Free Estimates



**Bob Ventres**  
 Owner/Operator  
 East Haddam, CT

Licensed &  
 Insured  
 CT Lic #B-2878

**GET MONEY FOR YOUR GOLD**

*The Original* 

**GUILFORD COIN EXCHANGE**

Experts in collectible coins and top dollar paid for your unwanted jewelry. Ask for Steve.



*Local business since 1970*  
 69 Whitfield St., Guilford  
 (On The Guilford Green)  
 Exit 58 off I-95 **203-453-9363**

**Budget Blinds**  
*a style for every point of view*

- Plantation Shutters
- Wood Blinds
- Honeycomb Shades
- Roller Shades • Vertical Blinds
- Silhouettes® • Woven Wood
- Roman Shades

PROFESSIONAL MEASURING AND INSTALLATION  
 WE BRING OUR SHOWROOM TO YOUR HOME  
 WE SERVICE WHAT WE SELL

website: [www.budgetblinds.com](http://www.budgetblinds.com)  
 email: [pmflaherty@budgetblinds.com](mailto:pmflaherty@budgetblinds.com)

**860.399.6442**   
*ask for Pat or Marc*

What are you doing this summer?



**Brewer Boating Club**




**Boating Made Simple.**  
 One Annual Membership -- Unlimited Fun!  
 Visit our website for all the details!



[www.BrewerBoatingClub.com](http://www.BrewerBoatingClub.com)  
 860.399.7906

**THE CHEESE SHOP**  
*of Centerbrook*



**Our passion is cheese.**  
 We have cheeses from France, Italy, Spain, Australia, Denmark, England, Switzerland, Sweden, Argentina, Canada, Germany, Holland, Ireland, Norway, and the United States, just to name a few.

**HOURS**  
 Open Monday - Saturday 10-6, Closed Sunday  
 33 Main Street, Centerbrook, CT 06409  
**860-767-8500**  
[www.cheeseshopcenterbrook.com](http://www.cheeseshopcenterbrook.com)



NOW INTRODUCING  
**SmartStrand<sup>®</sup> Silk**  
with DuPont<sup>™</sup> Sorona<sup>™</sup> renewably sourced polytrien<sup>®</sup>

WELCOME TO A NEW STANDARD  
 OF LUXURY, STYLE AND COMFORT

LARGEST SELECTION ON THE SHORELINE

*Karastan*  
 Since 1928  
 karastan.com



ON  
 SALE  
 NOW

Beautiful and Luxuriously Soft all in a fiber so gentle yet durable at the same time. You'll fall in love with its Silky Soft comfort.

SmartStrand<sup>®</sup> Silk<sup>™</sup> with DuPont<sup>™</sup> Sorona<sup>™</sup> is the ONLY luxuriously soft carpet that cleans with just water and has built-in soil protection that never washes or wears off.

**WESTBROOK**  
 FLOOR COVERING

**860.399.6161**  
 www.westbrookfloor.com  
 1275 Boston Post Road  
 Westbrook, CT 06498

Tuesday - Friday: 9 a.m. - 5 p.m.  
 Saturday: 10 a.m. - 4 p.m.  
 Closed Sunday & Monday  
 Evening Appointments Available

CALL TODAY FOR A PRIVATE TOUR: 860-345-3779

There are so many reasons  
 why May loves her home  
 at The Saybrook at Haddam.

May enjoys her special chats with the professional, caring staff at The Saybrook at Haddam. Her family has peace of mind because Mom is getting the assistance she needs. Her beautifully decorated, brightly lit apartment makes her feel right at home, not to mention the fact she has so many friends in the community. There's always something to do - including social and cultural activities, exercise, wellness classes and more.

**For independent residents,** The Saybrook at Haddam offers gracious retirement living with so much included in the monthly fee.

**For residents who need more assistance** with daily living, the professional, experienced staff is ready to meet their needs.



Resident May Gaudio with Allie Jiane, R.N.



**An Assisted Living Retirement Community**

1556 Saybrook Road, Haddam, CT 06438

[www.thesaybrookathaddam.com](http://www.thesaybrookathaddam.com)

Also featuring **Safe Harbor**, a special care program for residents with Alzheimer's or dementia.



# Earth Care

of Old Lyme

*"where vision becomes reality"*



## Property Management & Maintenance Services

### Grounds Program Includes:

- Designing, Constructing & Maintaining Your Property
- Refurbish, Enlarge or Top Dress Your Stone Driveway, Access Road, etc.
- Water Drainage Problems Addressed
- Cobblestones Drives, Edging & Aprons
- Stonewall Construction & Restoration
- Landclearing • Excavating

Tired of Unreliable People? Call

**David K. Flagge**

*Certified Master Gardener*  
Shore Road, Old Lyme, CT  
Fully Insured - Lic. #578608  
Phone & Fax: 860-434-0558



11 Halls Road ~ Old Lyme

**860.598.9032**

salonpurect@gmail.com

www.SalonPureCT.com

**20% Off your first service!**

# KING FAMILY EYE CARE, LLC

Matthew King, O.D. • Susan Evans, O.D.

William Lavoie, O.D. • Gerard Mason, O.D. • Peggy Scougall, L.O.

**Quality eye care for the whole family  
with contact lens fittings available  
upon request**

Week day, evening and Saturday hours  
available for your convenience

*MOST INSURANCES ACCEPTED*

[www.kingfamilyeyecare.com](http://www.kingfamilyeyecare.com)



KingFamilyEyeCare



@KingFamilyEye

Located in LensCrafters  
761 Boston Post Rd  
Old Saybrook, CT 06475  
860-388-9300

Located in LensCrafters  
80 Town Line Rd  
Rocky Hill, CT 06067  
860-258-2380



Find us on the web!  
[kingfamilyeyecare.com](http://kingfamilyeyecare.com)



design  
marketing  
communication



“The aim of marketing is to know and understand the customer so well the product or service fits him and sells itself.”

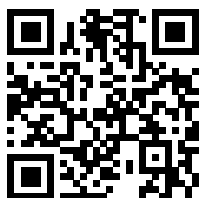
Peter F. Drucker



essex  
printing

860 767 9087  
essexprinting.com

18 Industrial Park Road  
Centerbrook CT 06409





**OLD LYME EVENTS**  
 Old Lyme Town Hall  
 Lyme Street  
 Old Lyme, CT 06371

PRSR STD  
 U.S. Postage  
 PAID  
 Permit No. 155  
 Deep River, CT

POSTAL PATRON LOCAL



## We Star in Loans with Great Rates

At Essex Savings Bank, we offer the loans you need to build a business, purchase or refinance a home, undertake home improvements, buy a car, pay tuition, and make your dreams come true.

In addition to great rates, our lending programs have convenient and flexible features including:

- ★ One-closing fixed rate construction to permanent loans
- ★ Home equity loans with either a fixed or variable interest rate
- ★ Access to home equity credit lines when needed

Talk to us today to see why Essex Savings Bank is known as the "Loan Star." Take advantage of our great rates and attractive features combined with personal service and knowledgeable loan officers.

- Consumer Loans**
- ★ Mortgage
  - ★ Construction
  - ★ Home Equity
  - ★ Line of Credit
  - ★ Collateral
  - ★ Automobile
  - ★ Personal

- Business Loans**
- ★ Commercial Mortgage
  - ★ Construction
  - ★ Commercial Term
  - ★ Line of Credit
  - ★ SBA



Essex, 35 Plains Road, 860-767-2573 • Essex, 9 Main Street, 860-767-8238  
 Chester, 203 Middlesex Avenue, 860-526-0000 • Madison, 99 Durham Road, 203-318-8611  
 Old Lyme, 101 Halls Road, 860-434-1646 • Old Saybrook, 155 Main Street, 860-388-3543  
 Call Toll-Free: 877-377-3922 • [www.essexsavings.com](http://www.essexsavings.com)

Member FDIC

